

4856D5

WESTMINSTER PLAZA
115-213

0031
RES A
12800
116-513-000-000
1.3266 AC

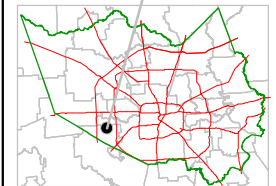
Harris County Appraisal District



0 100 200
PUBLICATION DATE:
1/20/2012

Geospatial or map data maintained by the Harris County Appraisal District is for informational purposes and may not have been prepared for or be suitable for legal, engineering, or surveying purposes. It does not represent an on-the-ground survey and only represents the approximate location of property boundaries.

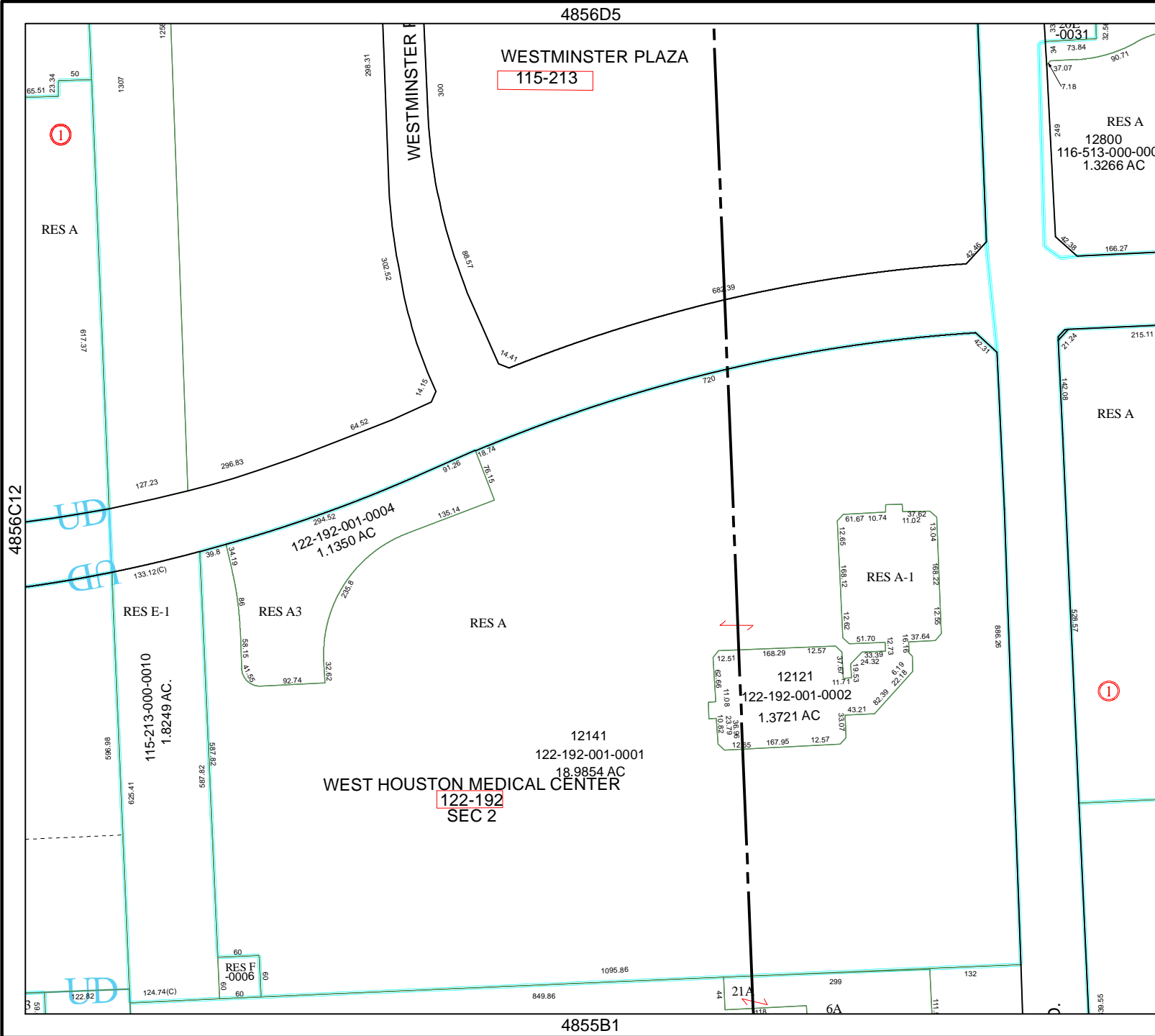
MAP LOCATION



FACET 4856D

1	2	3	4
5	6	7	8
9	10	11	12

4855B1



4856D10