

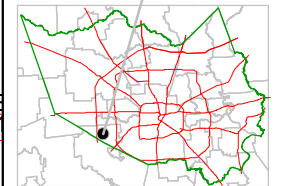
Harris County Appraisal District



0 100 200
 PUBLICATION DATE:
 1/20/2012

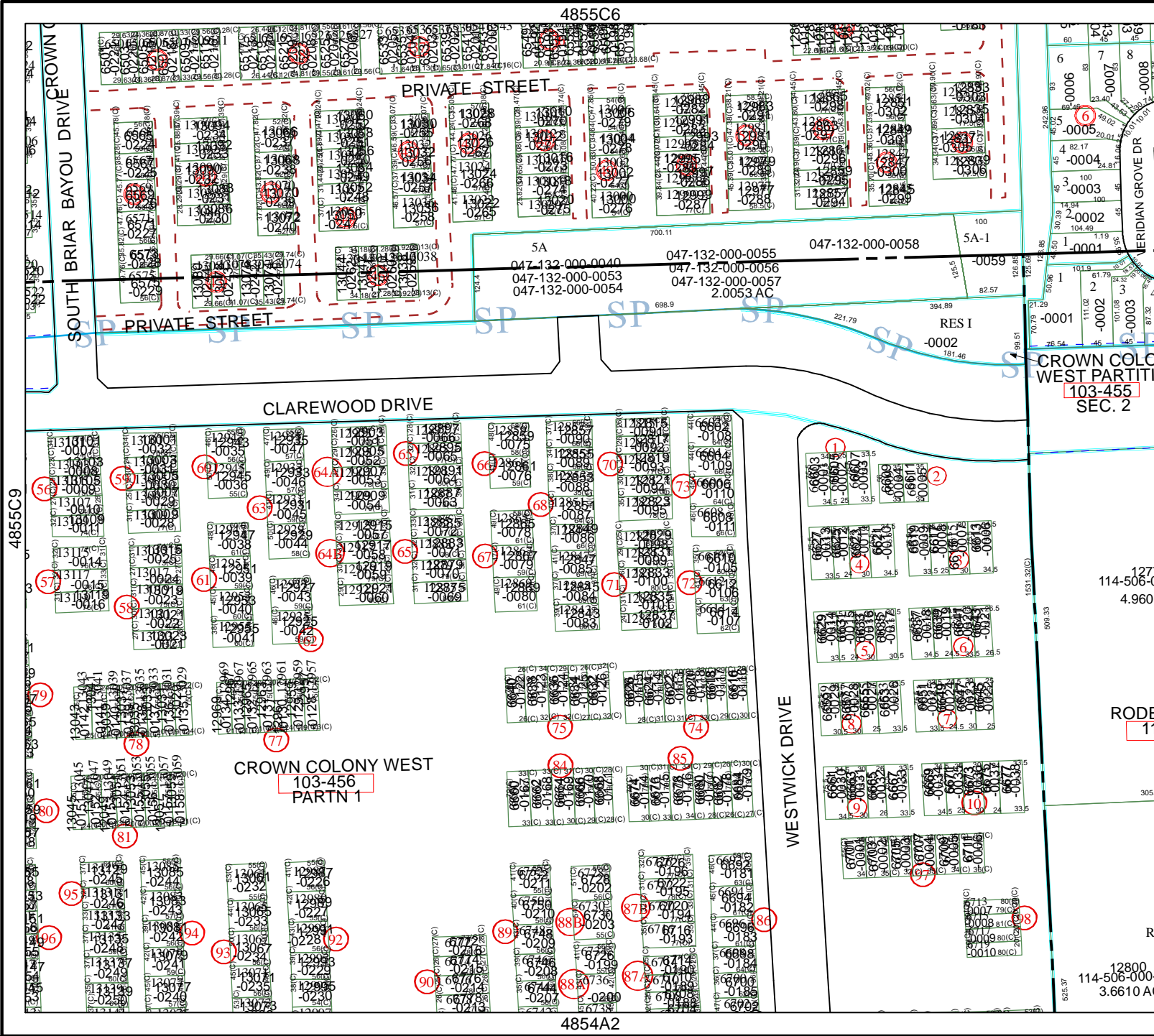
Geospatial or map data maintained by the Harris County Appraisal District is for informational purposes and may not have been prepared for or be suitable for legal, engineering, or surveying purposes. It does not represent an on-the-ground survey and only represents the approximate location of property boundaries.

MAP LOCATION



FACET 4855C

1	2	3	4
5	6	7	8
9	10	11	12



4855C11

127
 114-506-0
 4.960

RODE
 17

12800
 114-506-000-
 3.6610 A

4855C9

4855C6

4854A2