

Harris County Appraisal District

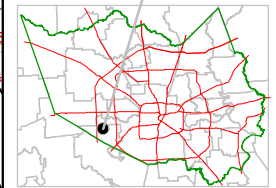


0 100 200

PUBLICATION DATE:
1/20/2012

Geospatial or map data maintained by the Harris County Appraisal District is for informational purposes and may not be suitable for legal, engineering, or surveying purposes. It does not represent an on-the-ground survey and only represents the approximate location of property boundaries.

MAP LOCATION



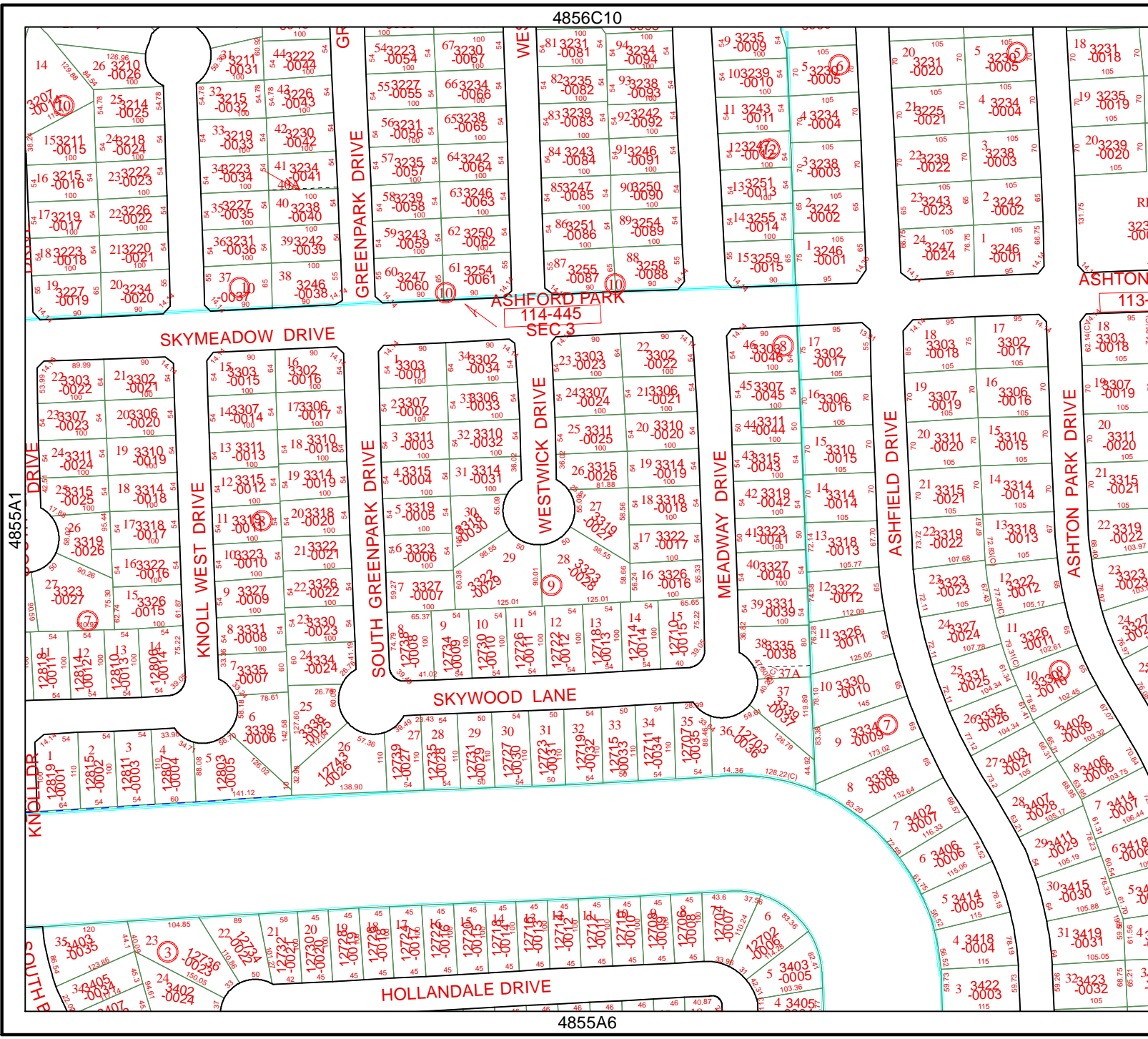
FACET 4855A

1	2	3	4
5	6	7	8
9	10	11	12

4856C10

ASHFORD PARK
114-445
SEC 3

4855A6



4855A3

