

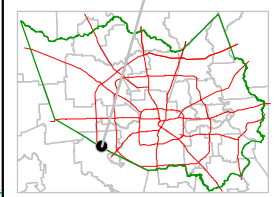
Harris County Appraisal District



0 100 200
PUBLICATION DATE:
 1/20/2012

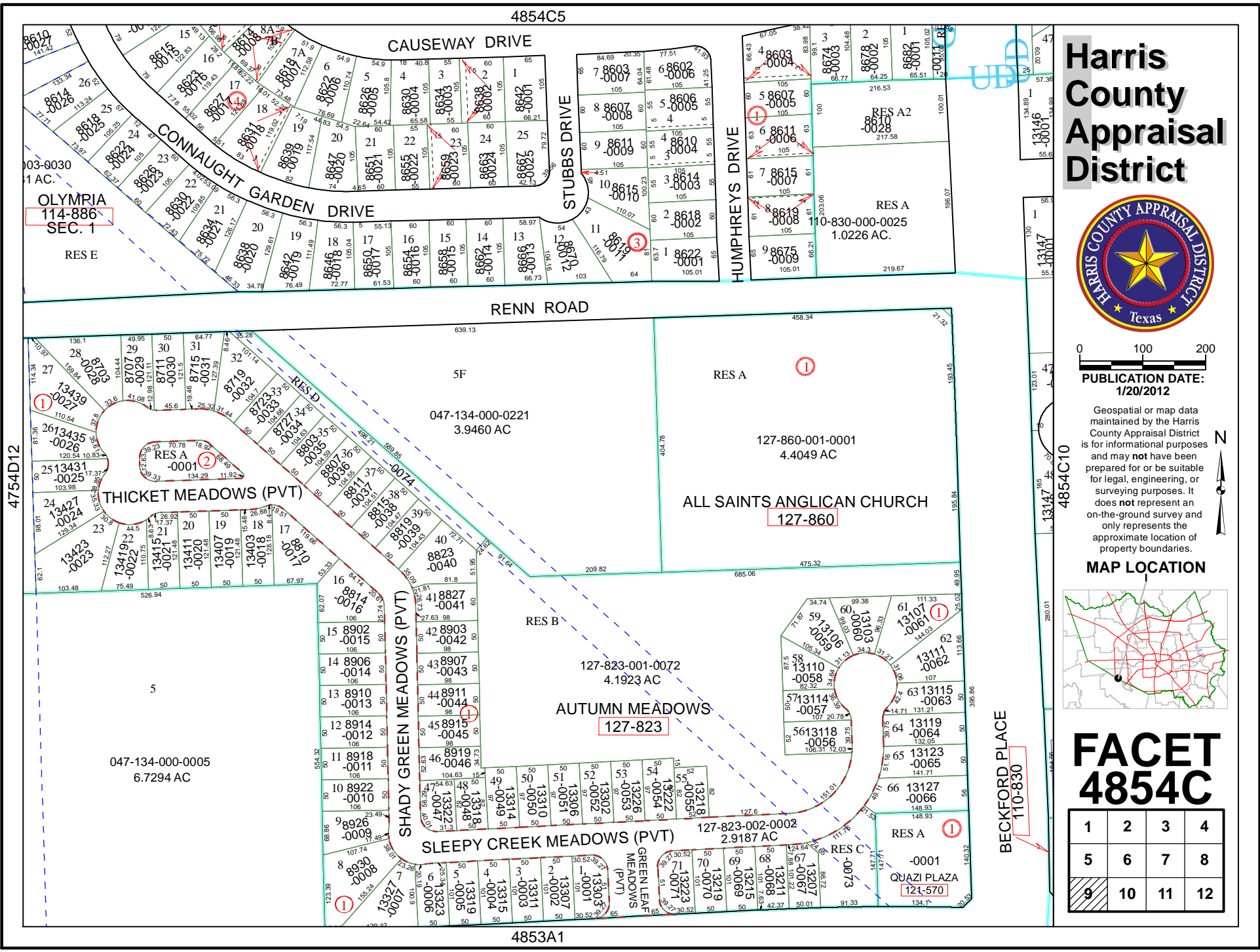
Geospatial or map data maintained by the Harris County Appraisal District is for informational purposes and may not have been prepared for or be suitable for legal, engineering, or surveying purposes. It does not represent an on-the-ground survey and only represents the approximate location of property boundaries.

MAP LOCATION



FACET 4854C

1	2	3	4
5	6	7	8
9	10	11	12



BECKFORD PLACE
 110-830

4754D12

4854C10



4854C5

4853A1