

4854B5

COOK RO

TWO WORLDS
105-960
SEC. 1

RES B

7520
5-960-000-0002
12.6100 AC.

COURTYARD HOMES
114-606
PH. 8

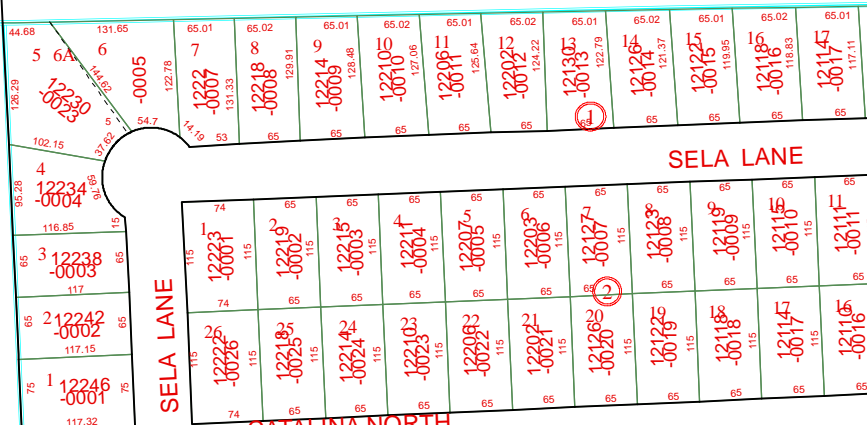
CORONA LANE

4854A12



TWO WORLDS T/H
105-963
SEC. 1

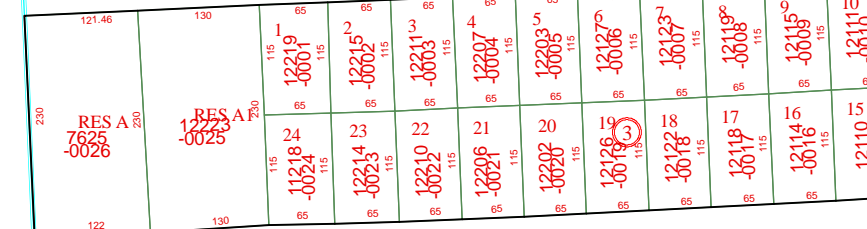
4854D1



SELA LANE

CATALINA NORTH
101-394

CORONA LANE



SEA SHORE DRIVE

POMPANO LANE

POMPANO LANE

Harris County Appraisal District

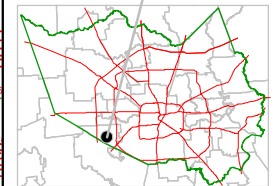


0 100 200

PUBLICATION DATE:
1/20/2012

Geospatial or map data maintained by the Harris County Appraisal District is for informational purposes and may not have been prepared for or be suitable for legal, engineering, or surveying purposes. It does not represent an on-the-ground survey and only represents the approximate location of property boundaries.

MAP LOCATION



FACET 4854B

1	2	3	4
5	6	7	8
9	10	11	12

4854B10