

4853B10

PLUM BROOK DRIVE

GREEN GLADE DRIVE

CREEK HURST DRIVE

LANGBROOK DRIVE

TINGTON PARK DRIVE

SWAN GLEN DRIVE

KEELGLEN SEC. 3

4853D6

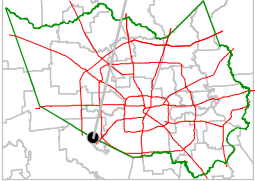
Harris County Appraisal District



0 100 200
PUBLICATION DATE:
1/20/2012

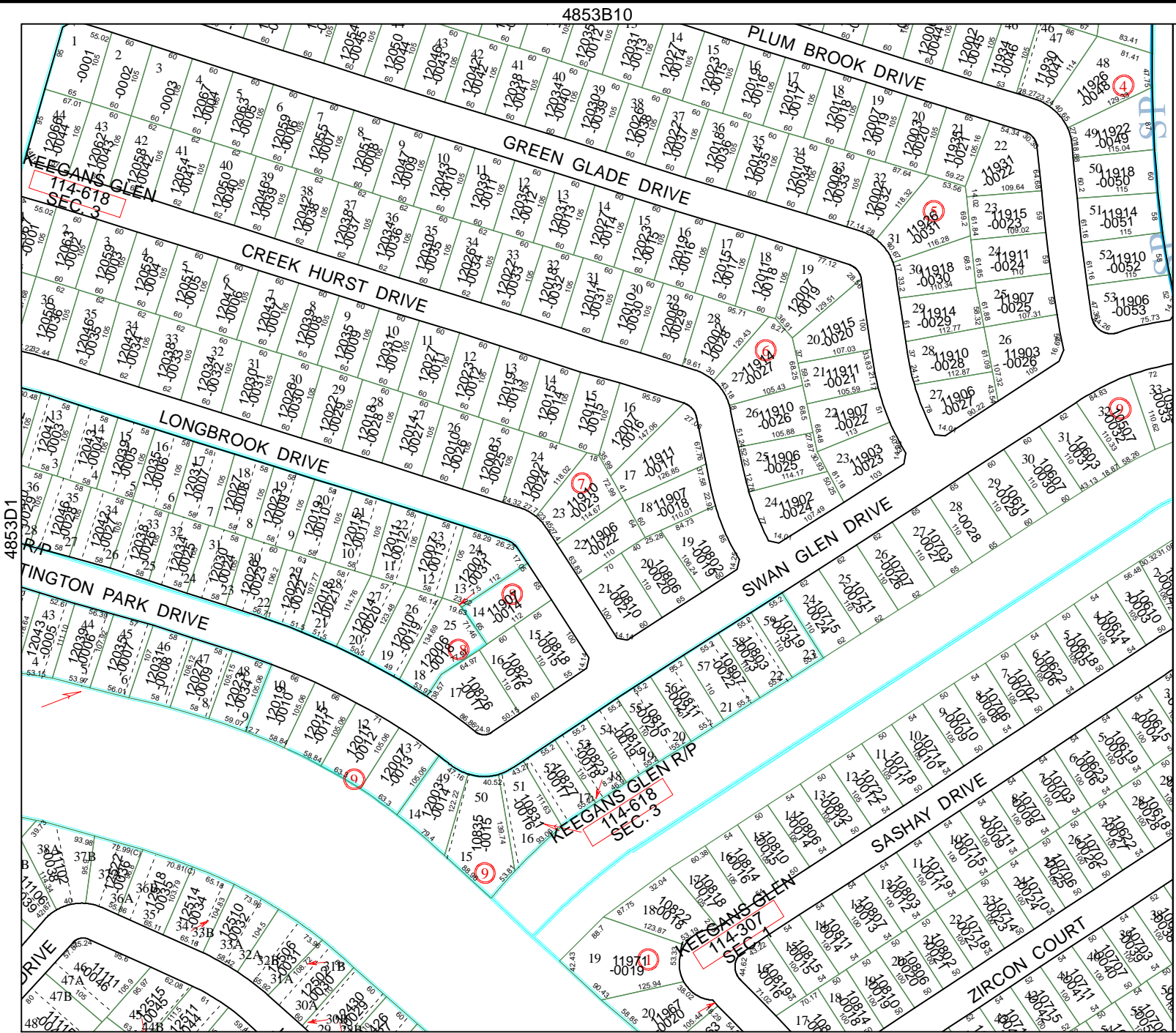
Geospatial or map data maintained by the Harris County Appraisal District is for informational purposes and may not have been prepared for or be suitable for legal, engineering, or surveying purposes. It does not represent an on-the-ground survey and only represents the approximate location of property boundaries.

MAP LOCATION



FACET 4853D

1	2	3	4
5	6	7	8
9	10	11	12



4853D1

4853D3

