

4853B4

Harris County Appraisal District

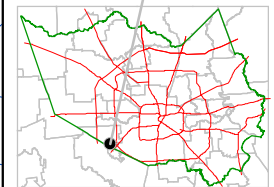


0 100 200

PUBLICATION DATE:
1/20/2012

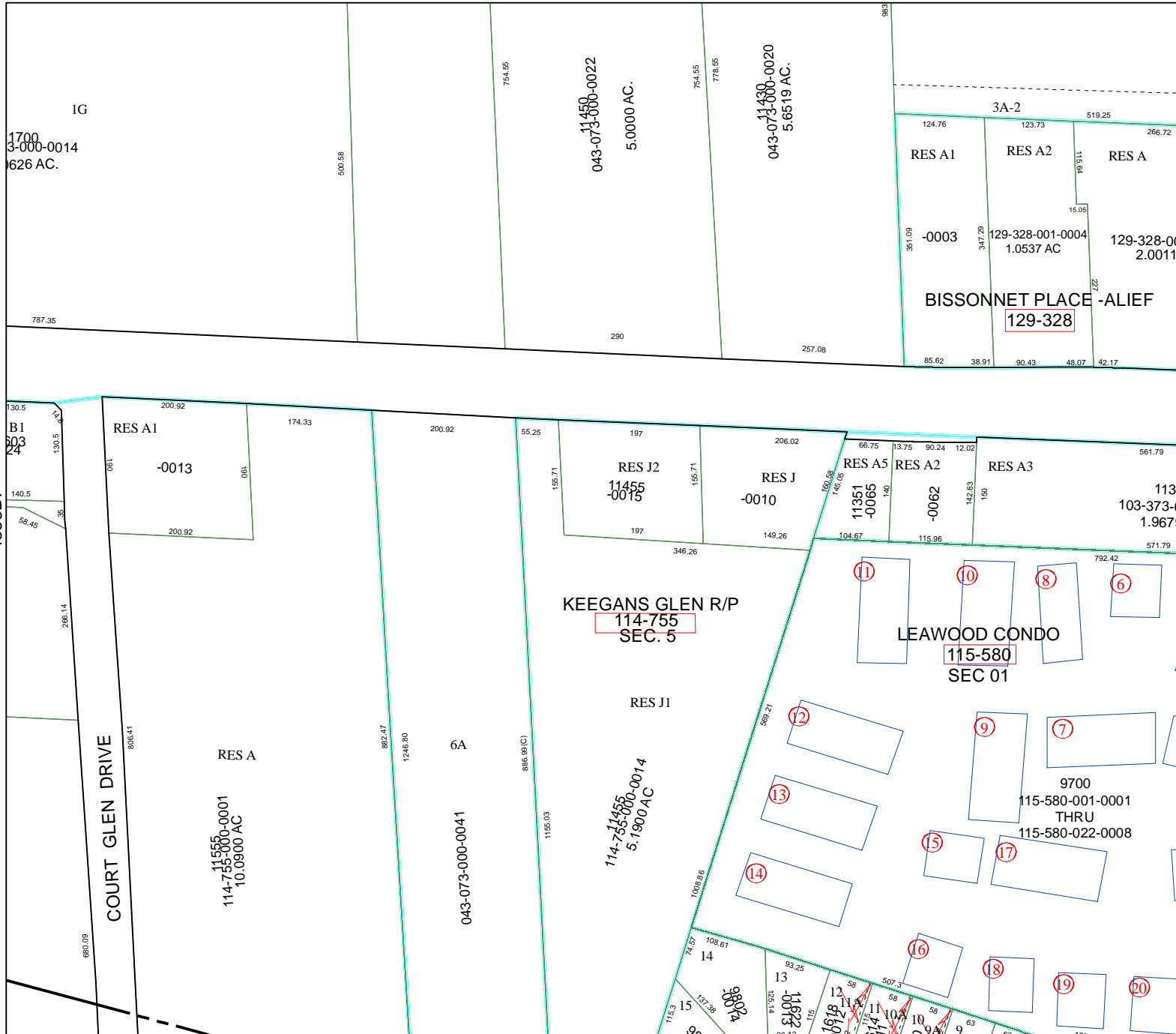
Geospatial or map data maintained by the Harris County Appraisal District is for informational purposes and may not have been prepared for or be suitable for legal, engineering, or surveying purposes. It does not represent an on-the-ground survey and only represents the approximate location of property boundaries.

MAP LOCATION



FACET 4853B

1	2	3	4
5	6	7	8
9	10	11	12



4853B12

4853B7

4953A5

COURT GLEN DRIVE