

4853A1

047-134-000-0033
3.9517 AC.

5B-3
047-134-000-0032
5.3629 AC.

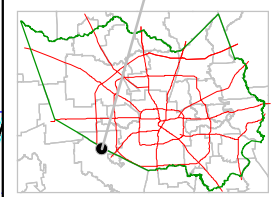
Harris County Appraisal District



0 100 200
PUBLICATION DATE:
1/20/2012

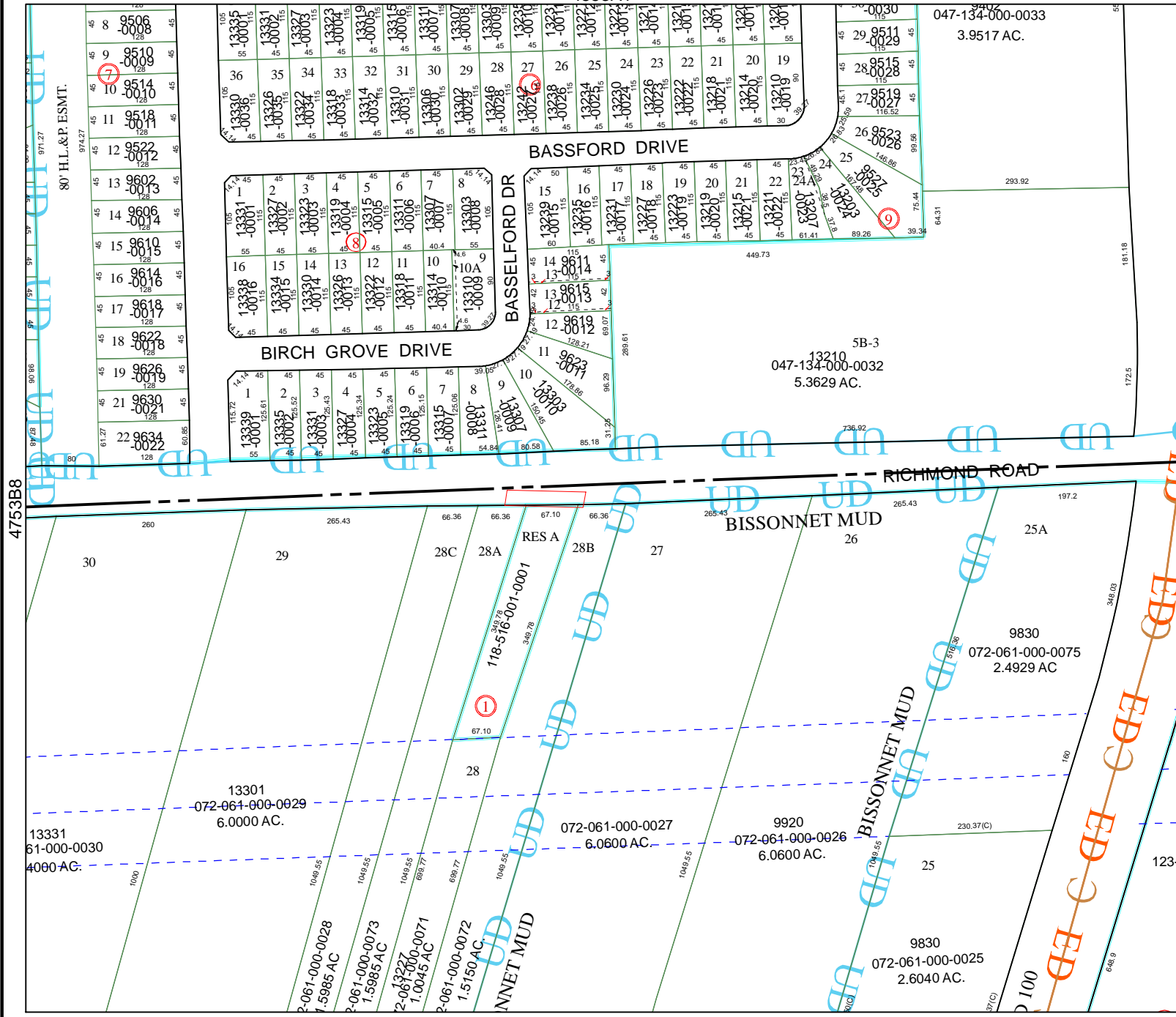
Geospatial or map data maintained by the Harris County Appraisal District is for informational purposes and may not have been prepared for or be suitable for legal, engineering, or surveying purposes. It does not represent an on-the-ground survey and only represents the approximate location of property boundaries.

MAP LOCATION



FACET 4853A

1	2	3	4
5	6	7	8
9	10	11	12



4853A9

4753B8

4853A6

80' H.L.&P. ESM.T.