

4853A8

105-525-000-0055
28.9741 AC.

4853A11

RES A1
9903
105-525-000-0057
9.2700 AC.

RES A2
-0058

4853C4

Harris County Appraisal District

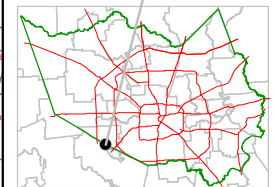


0 100 200

PUBLICATION DATE:
1/20/2012

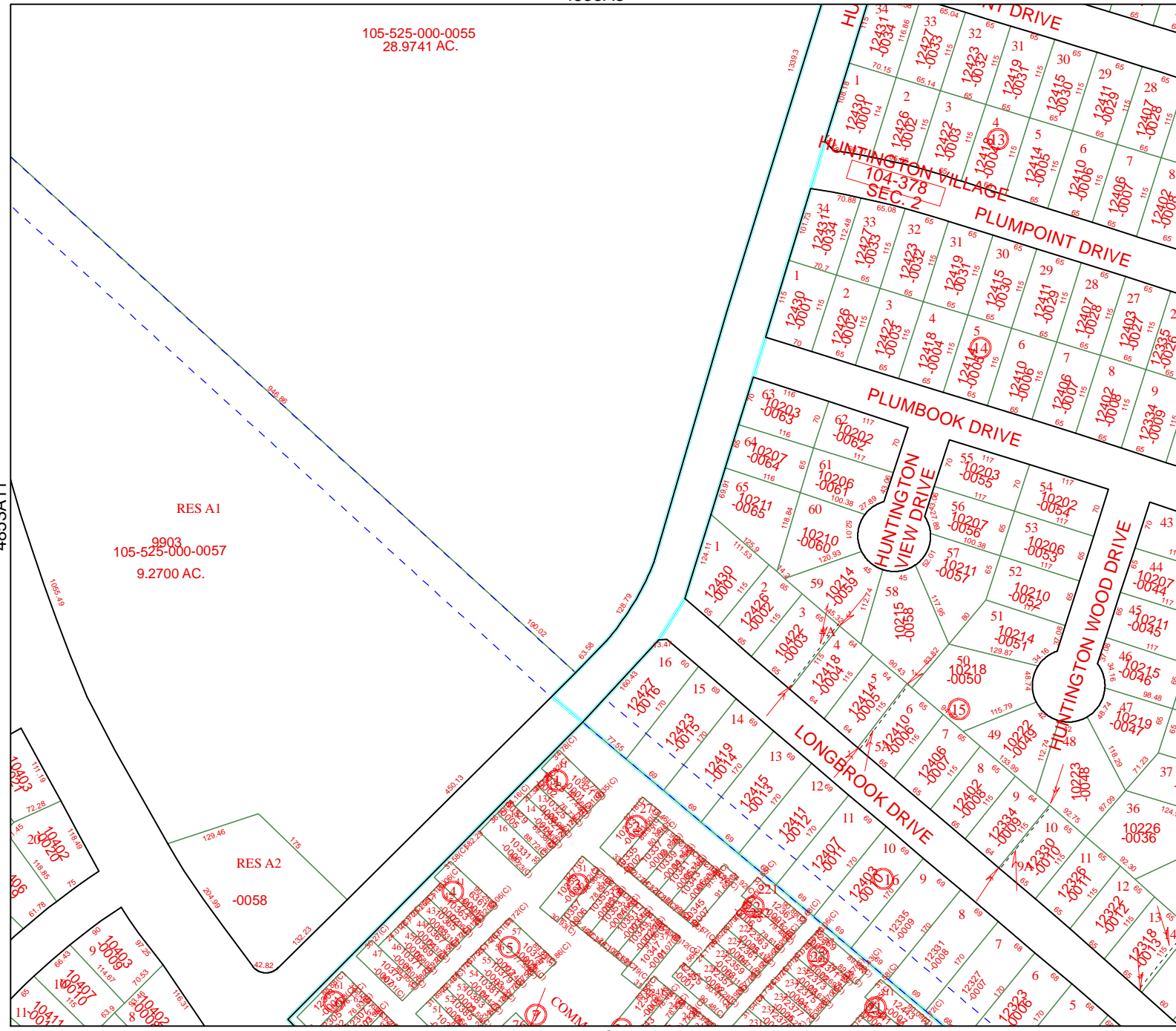
Geospatial or map data maintained by the Harris County Appraisal District is for informational purposes and may not have been prepared for or be suitable for legal, engineering, or surveying purposes. It does not represent an on-the-ground survey and only represents the approximate location of property boundaries.

MAP LOCATION



FACET 4853A

1	2	3	4
5	6	7	8
9	10	11	12



4853B9

