

4772C8

14B

# Harris County Appraisal District



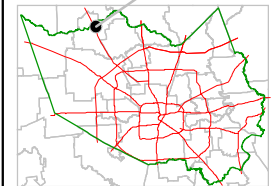
0 100 200

PUBLICATION DATE:  
8/15/2011

Geospatial or map data maintained by the Harris County Appraisal District is for informational purposes and may not have been prepared for or be suitable for legal, engineering, or surveying purposes. It does not represent an on-the-ground survey and only represents the approximate location of property boundaries.



MAP LOCATION

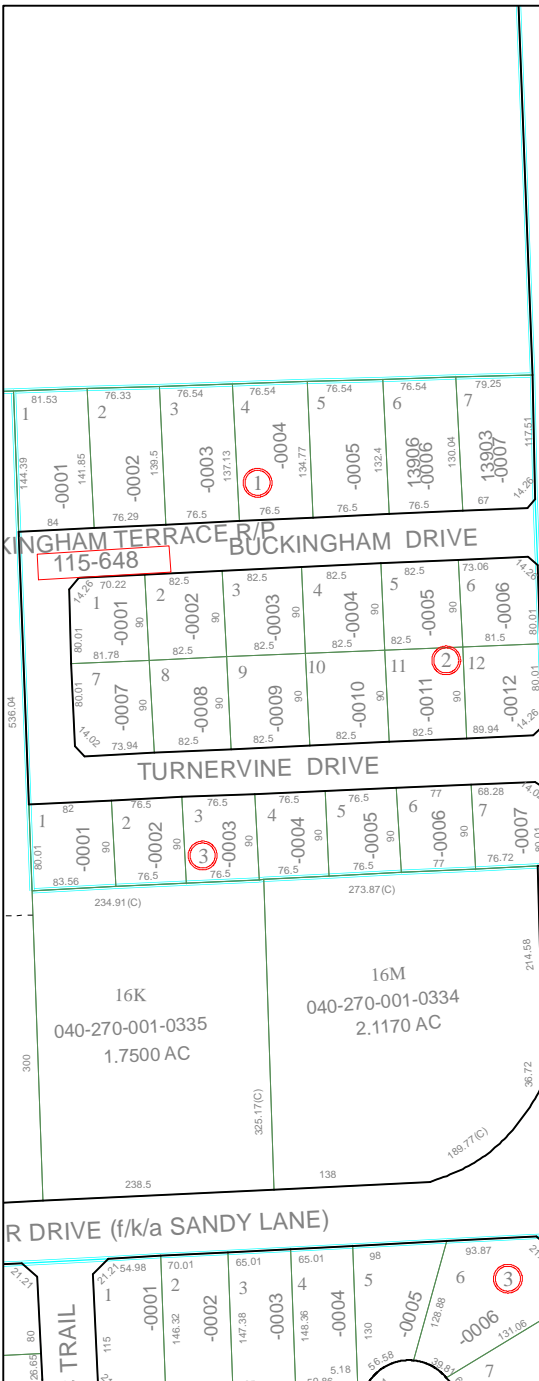


# FACET 4772C

|   |    |    |    |
|---|----|----|----|
| 1 | 2  | 3  | 4  |
| 5 | 6  | 7  | 8  |
| 9 | 10 | 11 | 12 |

4772C11

4772D9



QUINN ROAD

14A

BAKER DRIVE

4771A4

TOMBALL PINES  
115-515

TOMBALL I.S.D. TRANS CENTER  
117-223  
SEC 1

16K  
040-270-001-0335  
1.7500 AC

16M  
040-270-001-0334  
2.1170 AC