

4771A3

# Harris County Appraisal District



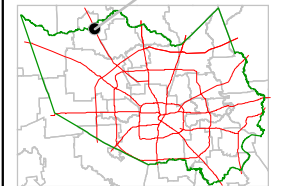
0 100 200

PUBLICATION DATE:  
2/2/2012

Geospatial or map data maintained by the Harris County Appraisal District is for informational purposes and may not have been prepared for or be suitable for legal, engineering, or surveying purposes. It does not represent an on-the-ground survey and only represents the approximate location of property boundaries.



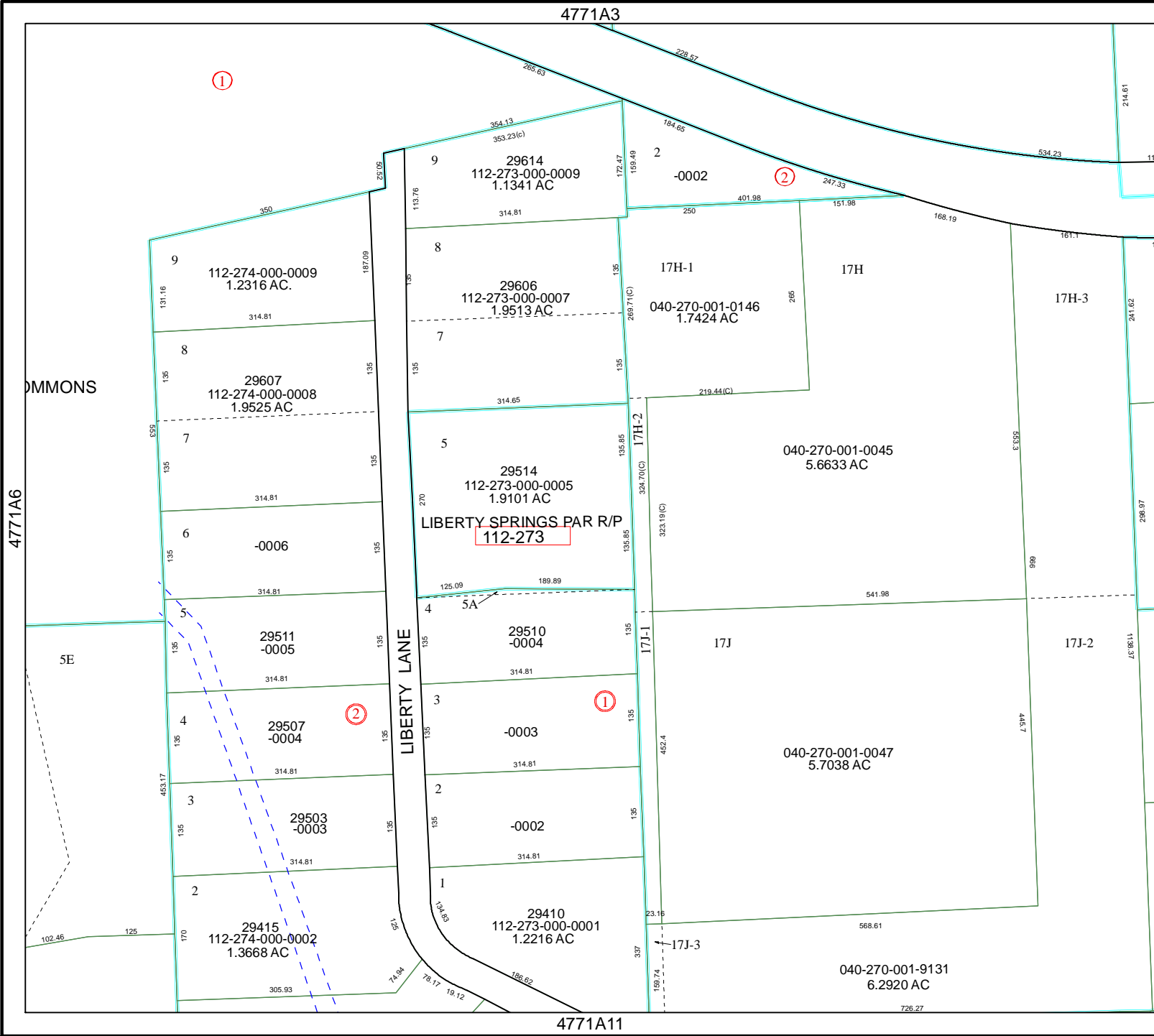
MAP LOCATION



## FACET 4771A

1	2	3	4
5	6	7	8
9	10	11	12

4771A11



4771A8

COMMONS

4771A6

SE

LIBERTY LANE

①

②

②

①

LIBERTY SPRINGS PAR R/P  
112-273

5A

112-274-000-0009  
1.2316 AC.

29606  
112-273-000-0007  
1.9513 AC

29607  
112-274-000-0008  
1.9525 AC

29514  
112-273-000-0005  
1.9101 AC

29511  
112-274-000-0005  
314.81

29507  
112-274-000-0004  
314.81

29503  
112-274-000-0003  
314.81

29415  
112-274-000-0002  
1.3668 AC

29410  
112-273-000-0001  
1.2216 AC

040-270-001-0045  
5.6633 AC

040-270-001-0047  
5.7038 AC

040-270-001-9131  
6.2920 AC