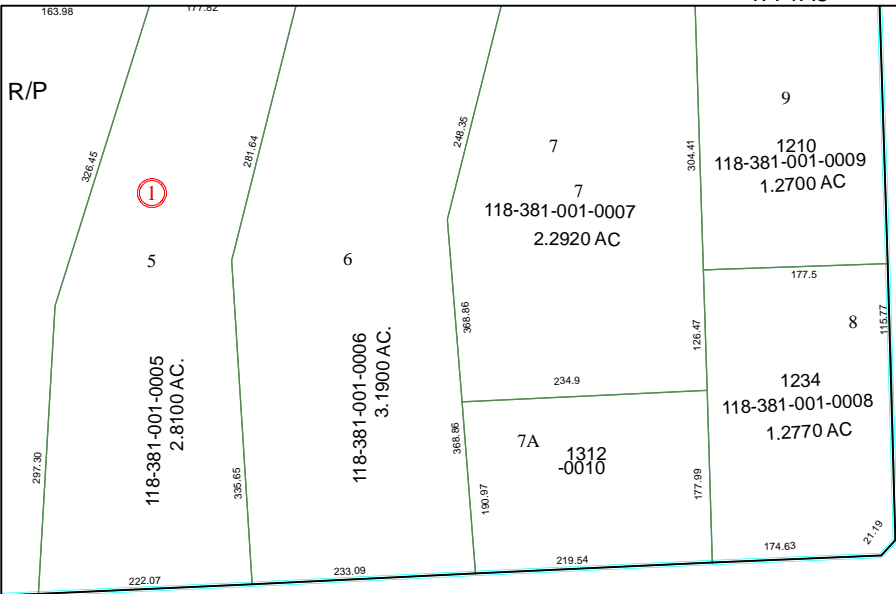
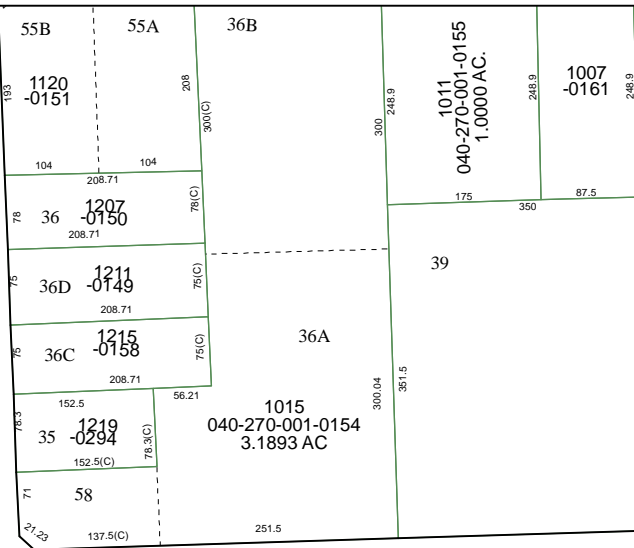


4771A8



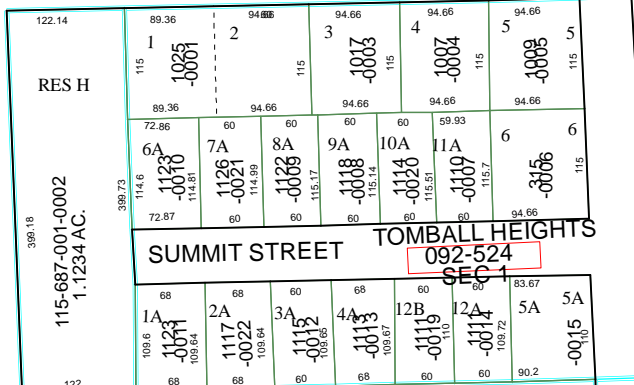
QUINN RD



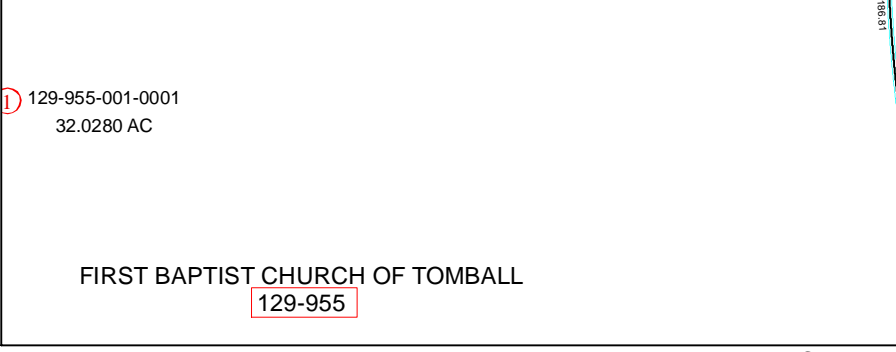
HICKS STREET



CODY DRIVE



SUMMIT STREET



4771C4

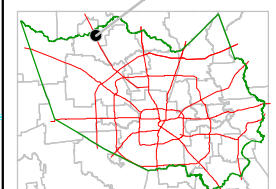
Harris County Appraisal District



0 100 200
PUBLICATION DATE: 2/2/2012

Geospatial or map data maintained by the Harris County Appraisal District is for informational purposes and may not be prepared for or be suitable for legal, engineering, or surveying purposes. It does not represent an on-the-ground survey and only represents the approximate location of property boundaries.

MAP LOCATION



FACET 4771A

1	2	3	4
5	6	7	8
9	10	11	12