

# Harris County Appraisal District

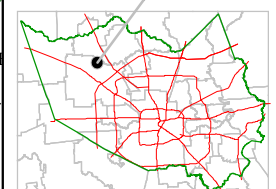


0 100 200  
**PUBLICATION DATE:**  
 8/18/2011

Geospatial or map data maintained by the Harris County Appraisal District is for informational purposes and may not have been prepared for or be suitable for legal, engineering, or surveying purposes. It does not represent an on-the-ground survey and only represents the approximate location of property boundaries.

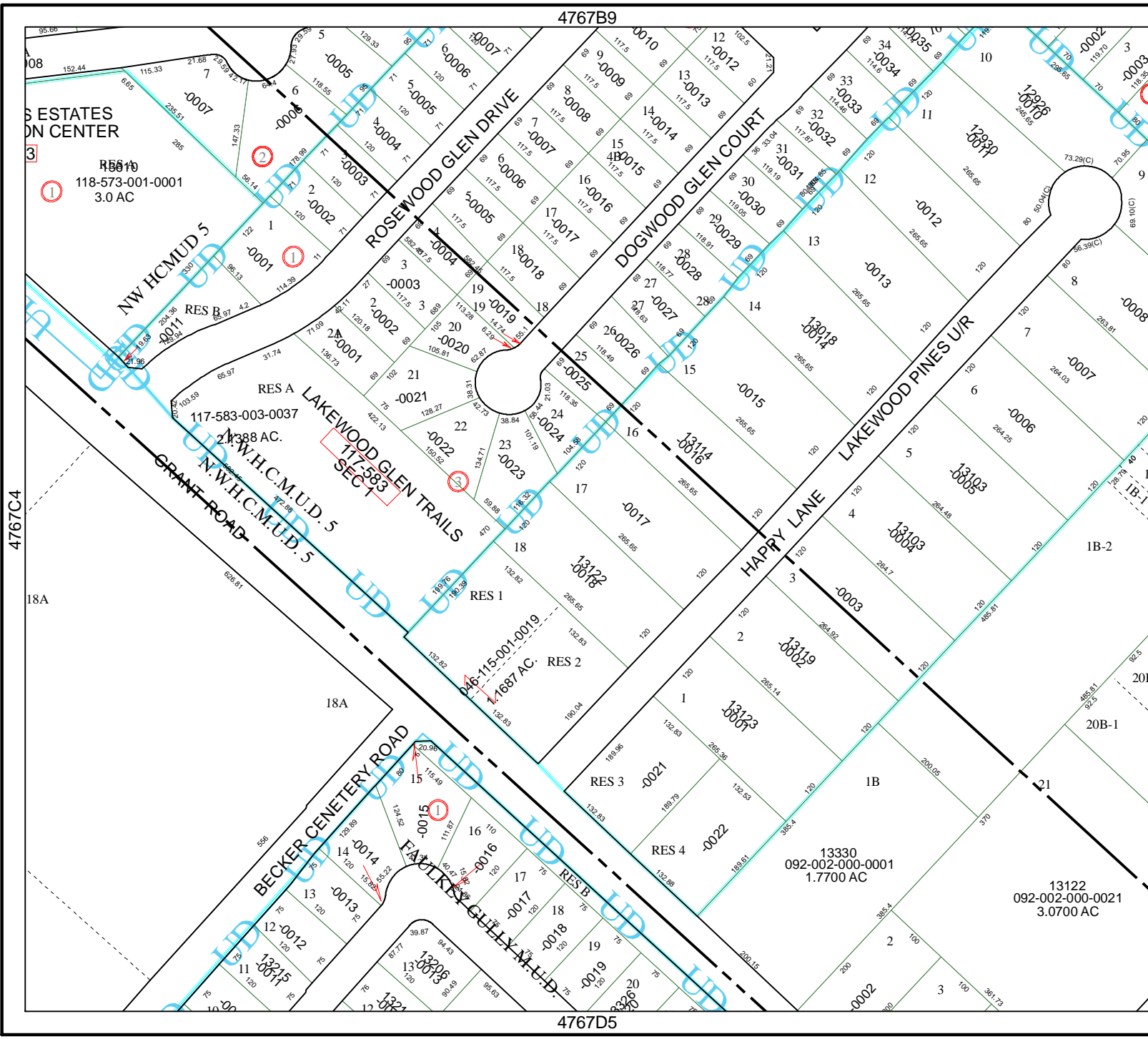


### MAP LOCATION



## FACET 4767D

|   |    |    |    |
|---|----|----|----|
| 1 | 2  | 3  | 4  |
| 5 | 6  | 7  | 8  |
| 9 | 10 | 11 | 12 |



ESTATES  
 ON CENTER  
 118-573-001-0001  
 3.0 AC

RES A  
 117-583-003-0037  
 2.1388 AC.

RES 2  
 115-001-0019  
 1.687 AC.

13330  
 092-002-000-0001  
 1.7700 AC

13122  
 092-002-000-0021  
 3.0700 AC