

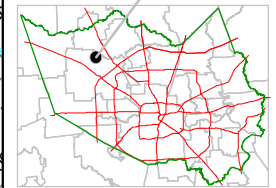
Harris County Appraisal District



0 100 200
 PUBLICATION DATE:
 8/15/2011

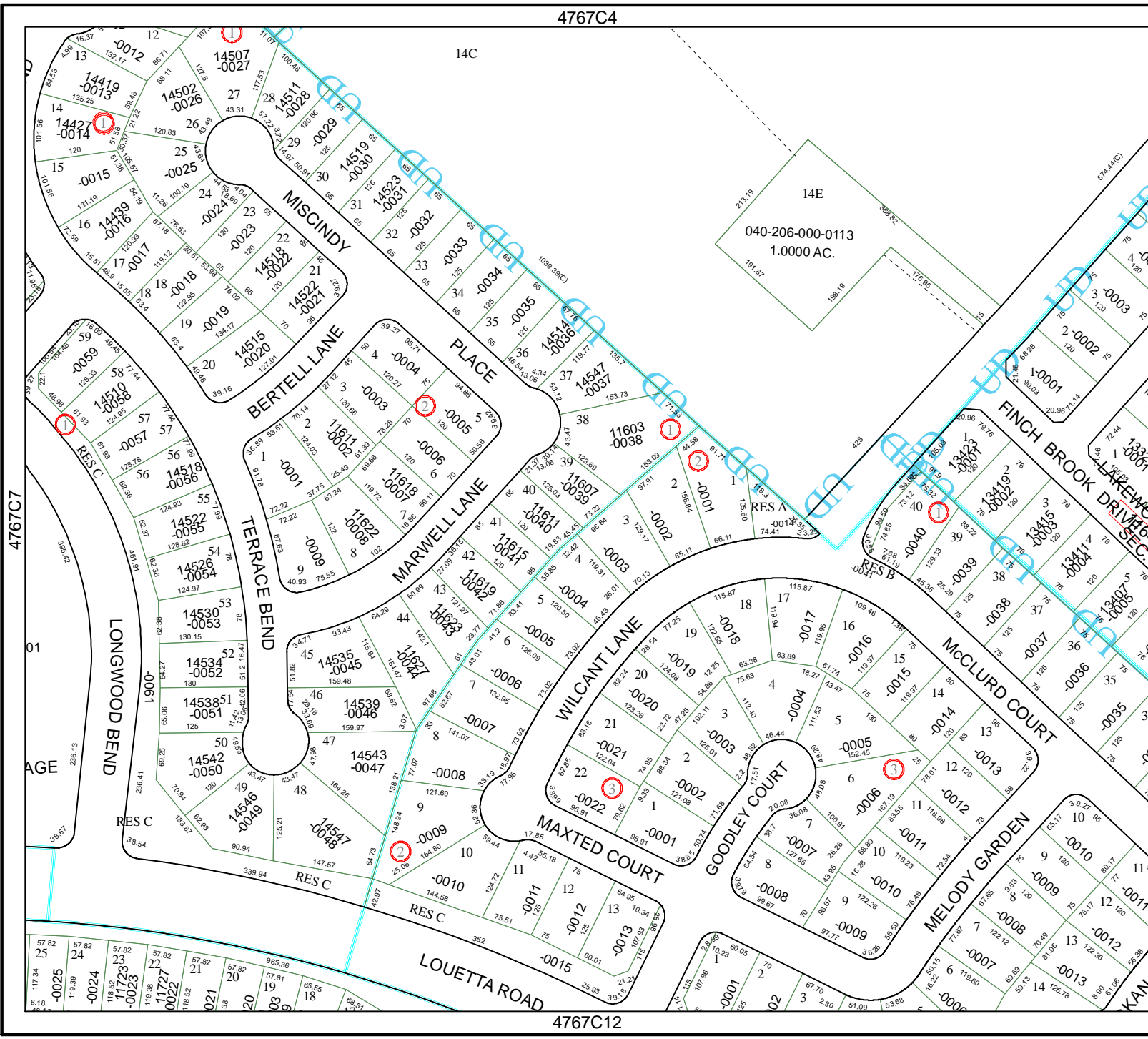
Geospatial or map data maintained by the Harris County Appraisal District is for informational purposes and may not have been prepared for or be suitable for legal, engineering, or surveying purposes. It does not represent an on-the-ground survey and only represents the approximate location of property boundaries.

MAP LOCATION



FACET 4767C

1	2	3	4
5	6	7	8
9	10	11	12



4767C4

14C

14E
 040-206-000-0113
 1.0000 AC.

4767C7

4767D5

4767C12