

4767A12

4767C8

Harris County Appraisal District

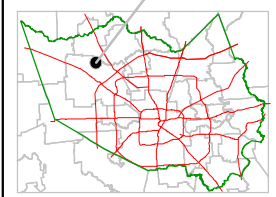


0 100 200
PUBLICATION DATE:
8/15/2011

Geospatial or map data maintained by the Harris County Appraisal District is for informational purposes and may not have been prepared for or be suitable for legal, engineering, or surveying purposes. It does not represent an on-the-ground survey and only represents the approximate location of property boundaries.



MAP LOCATION

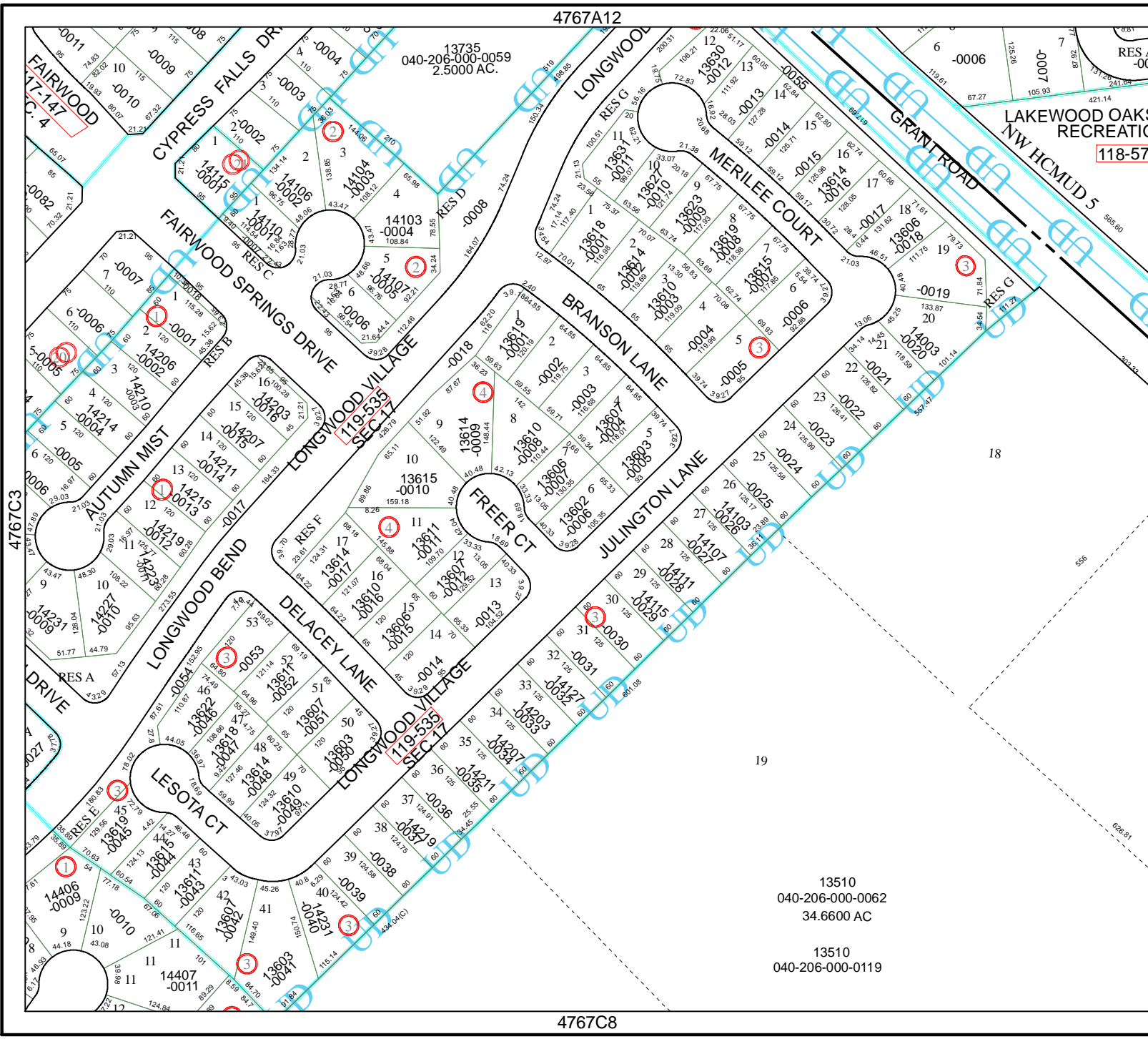


FACET 4767C

1	2	3	4
5	6	7	8
9	10	11	12

13510
040-206-000-0062
34.6600 AC

13510
040-206-000-0119



4767D1

18

19

626.81

556

115.61

67.27

105.93

421.14

565.60

126.26

137.26

241.04

119.51

131.26

119.51

105.93

67.27

421.14

565.60

119.51

105.93

67.27

421.14

565.60

119.51

105.93

67.27

421.14

565.60

119.51

105.93

67.27

421.14

565.60

119.51

105.93

67.27

421.14

565.60

119.51

105.93

67.27

421.14

565.60

119.51

105.93

67.27

421.14

565.60

119.51

105.93

67.27

421.14

565.60

119.51

105.93

67.27

421.14

565.60

4767C3

137.26

241.04

119.51

105.93

67.27

421.14

565.60

137.26

241.04

119.51

105.93

67.27

421.14

565.60

137.26

241.04

119.51

105.93

67.27

421.14

565.60

137.26

241.04

119.51

105.93

67.27

421.14

565.60

137.26

241.04

119.51

105.93

67.27

421.14

565.60

137.26

241.04

119.51

105.93

67.27

421.14

565.60

137.26

241.04

119.51

105.93

67.27

421.14

565.60

137.26

241.04

119.51

105.93

67.27

421.14

565.60

137.26

241.04

119.51

105.93

67.27

421.14

565.60

137.26

241.04

119.51

105.93

67.27

421.14

565.60

137.26

241.04

119.51

105.93

67.27

421.14

565.60

137.26

241.04

119.51

105.93

67.27

421.14

565.60

137.26

241.04

119.51

105.93

67.27

421.14

565.60

137.26

241.04

119.51

105.93

67.27

421.14

565.60

137.26

241.04

119.51

105.93

67.27

421.14

565.60

137.26

241.04

119.51

105.93

67.27

421.14

565.60

137.26

241.04

119.51

105.93

67.27

421.14

565.60

137.26

241.04

119.51

105.93

67.27

421.14

565.60

137.26

241.04

119.51

105.93

67.27

421.14

565.60

137.26

241.04

119.51

105.93

67.27

421.14

565.60

137.26

241.04

119.51

105.93

67.27

421.14

565.60

137.26

241.04

119.51

105.93

67.27

421.14

565.60

137.26

241.04

119.51

105.93

67.27

421.14

565.60

137.26

241.04

119.51

105.93

67.27

421.14

565.60

137.26

241.04

119.51

105.93

67.27

421.14

565.60

137.26

241.04

119.51

105.93

67.27

421.14

565.60

137.26

241.04

119.51

105.93

67.27

421.14

565.60

137.26

241.04

119.51

105.93

67.27

421.14

565.60

137.26

241.04

119.51

105.93

67.27

421.14

565.60

137.26

241.04

119.51

105.93

67.27

421.14

565.60

137.26

241.04

119.51

105.93

67.27

421.14

565.60

137.26

241.04

119.51

105.93

67.27

421.14

565.60

137.26

241.04

119.51

105.93

67.27

421.14

565.60