

Harris County Appraisal District

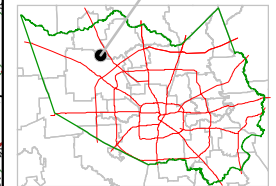


0 100 200

PUBLICATION DATE:
8/15/2011

Geospatial or map data maintained by the Harris County Appraisal District is for informational purposes and may not be prepared for or be suitable for legal, engineering, or surveying purposes. It does not represent an on-the-ground survey and only represents the approximate location of property boundaries.

MAP LOCATION

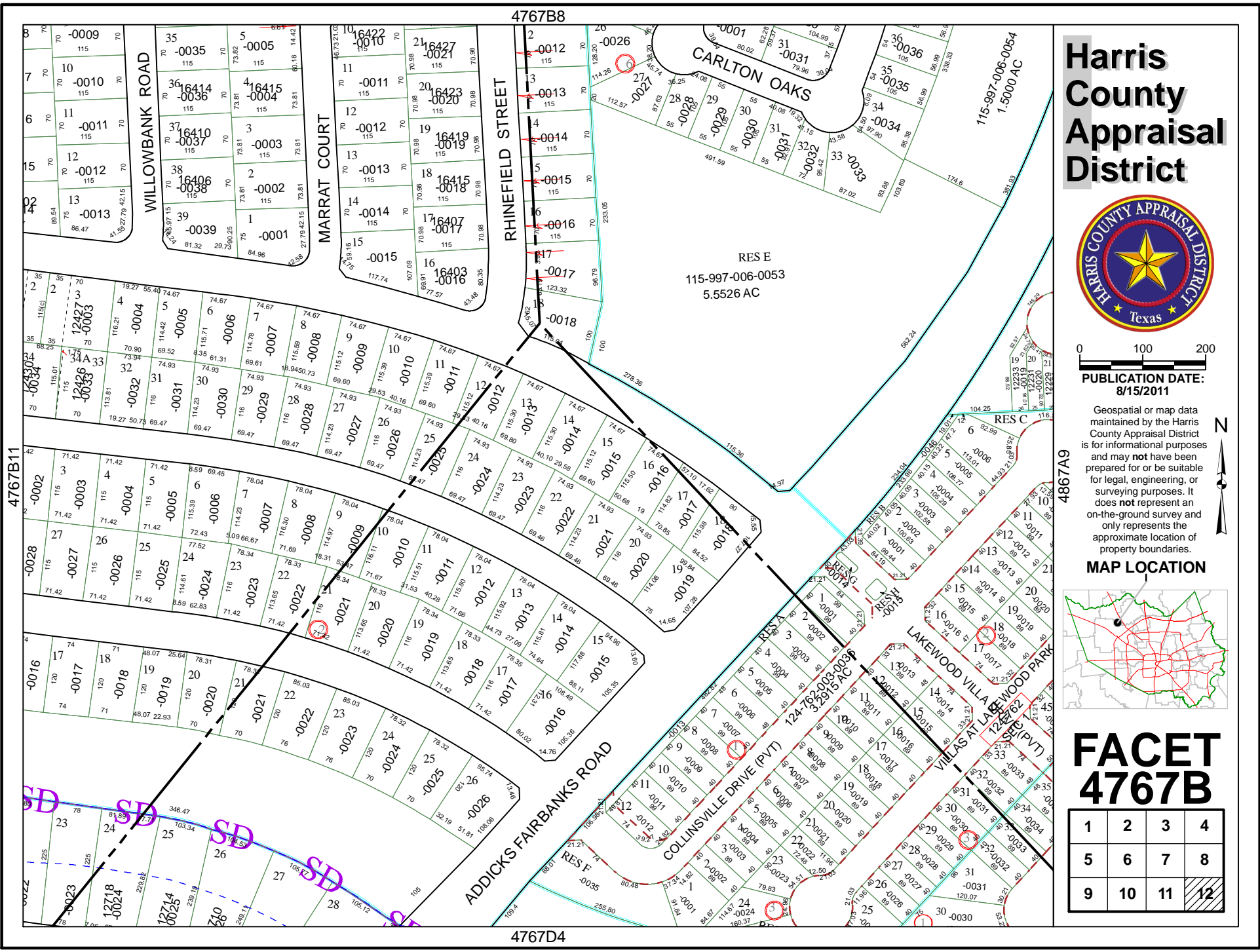


FACET 4767B

1	2	3	4
5	6	7	8
9	10	11	12

4767B8

4767D4



RES E
115-997-006-0053
5.5526 AC

115-997-006-0054
1.5000 AC

RES C

RES C
124-762-003-0039
3.2305 AC

RES C
124-762-003-0039
3.2305 AC

RES E
115-997-006-0053
5.5526 AC

4767B11

4867A9

