

4766D2

2C-6

# Harris County Appraisal District



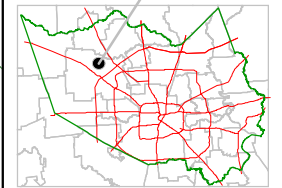
0 100 200

PUBLICATION DATE:  
10/4/2011

Geospatial or map data maintained by the Harris County Appraisal District is for informational purposes and may not have been prepared for or be suitable for legal, engineering, or surveying purposes. It does not represent an on-the-ground survey and only represents the approximate location of property boundaries.



## MAP LOCATION



# FACET 4766D

1	2	3	4
5	6	7	8
9	10	11	12

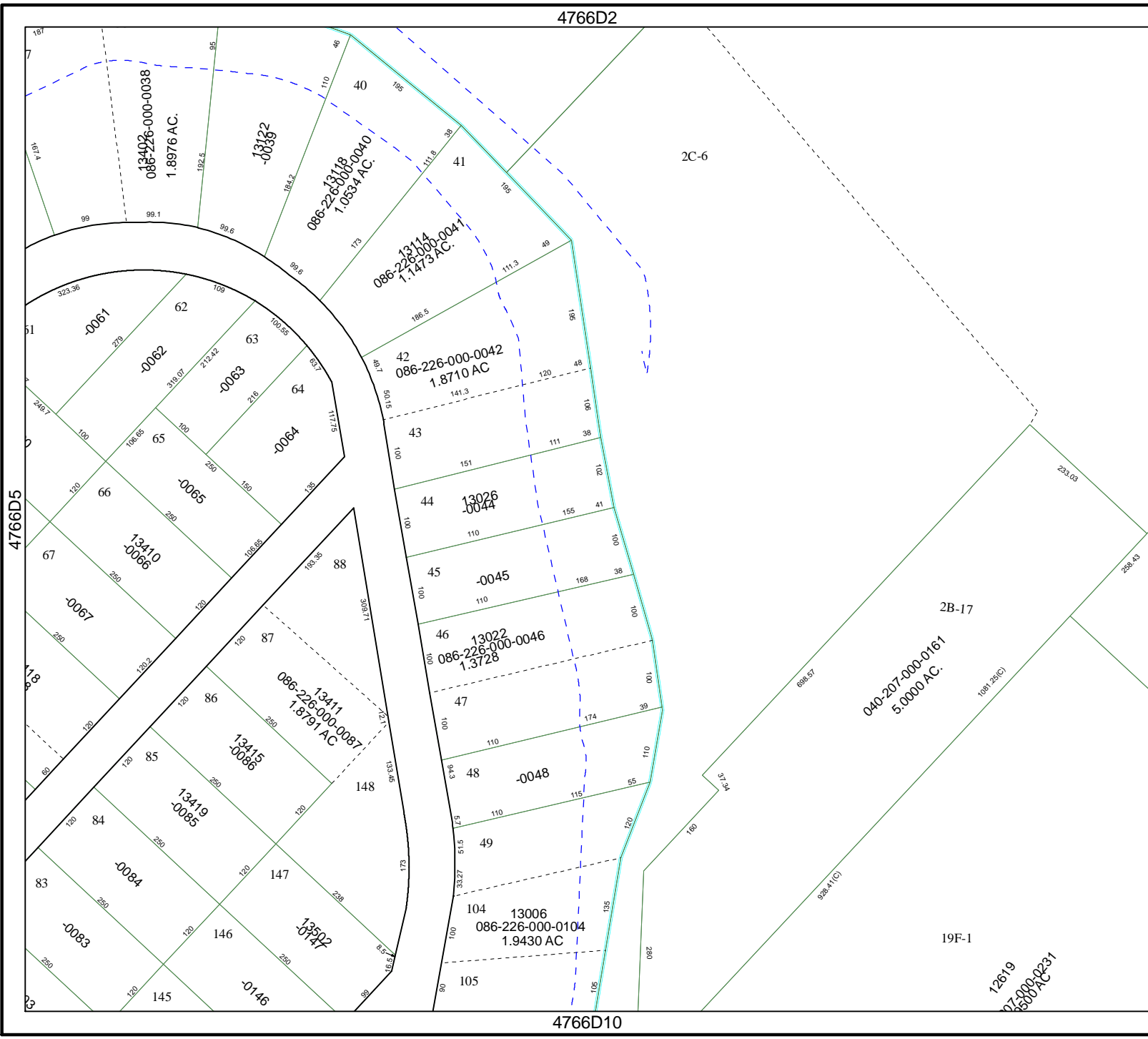
4766D10

2B-17

040-207-000-0161  
5.0000 AC.

19F-1

12619  
07-000-0231  
2500 AC



4766D5

4766D7