

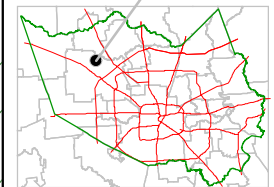
Harris County Appraisal District



0 100 200
 PUBLICATION DATE:
 8/15/2011

Geospatial or map data maintained by the Harris County Appraisal District is for informational purposes and may not have been prepared for or be suitable for legal, engineering, or surveying purposes. It does not represent an on-the-ground survey and only represents the approximate location of property boundaries.

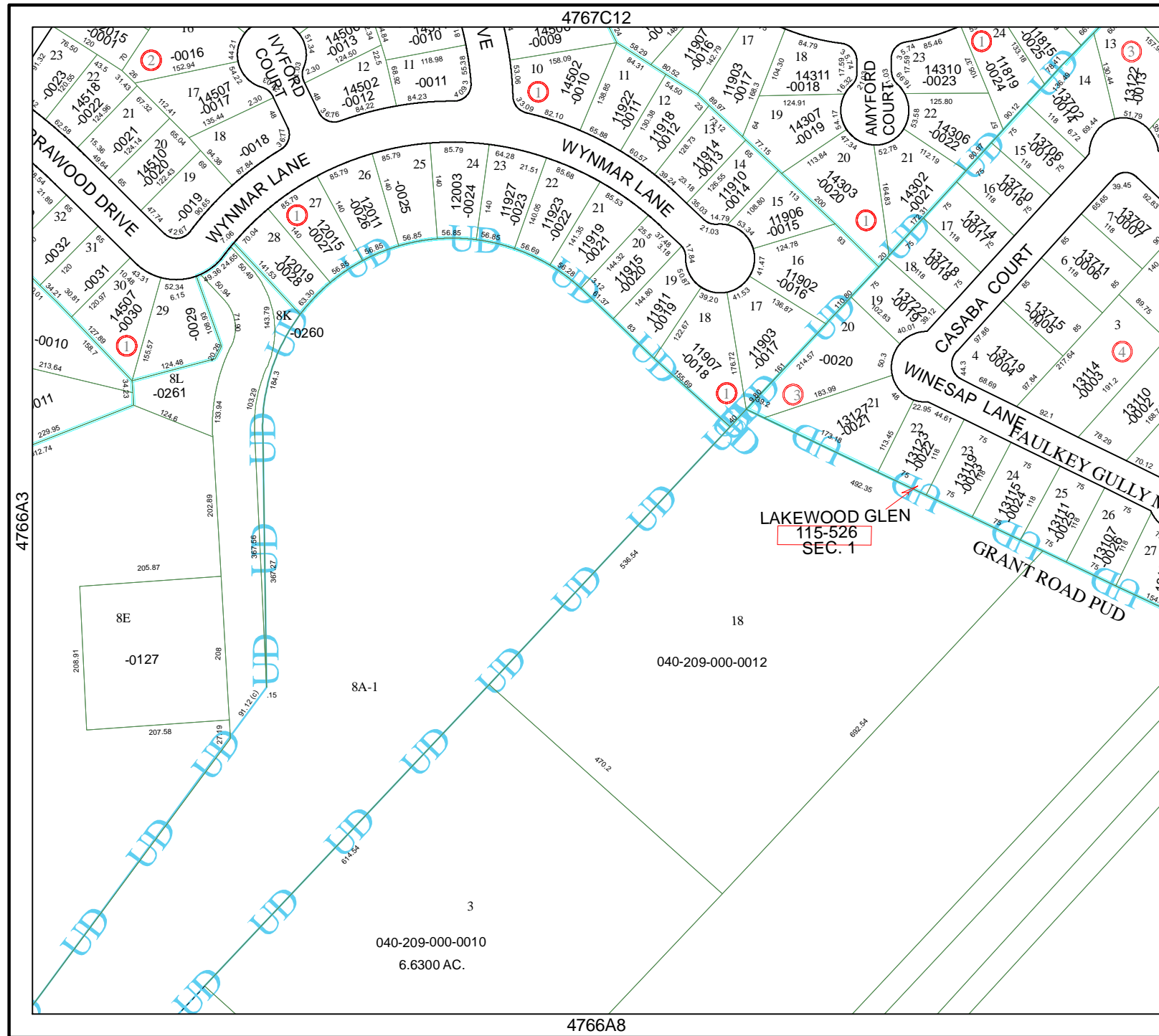
MAP LOCATION



FACET 4766A

1	2	3	4
5	6	7	8
9	10	11	12

4767C12



4766A8

040-209-000-0010
 6.6300 AC.

040-209-000-0012

8A-1

3

18

4766A3

4766B1