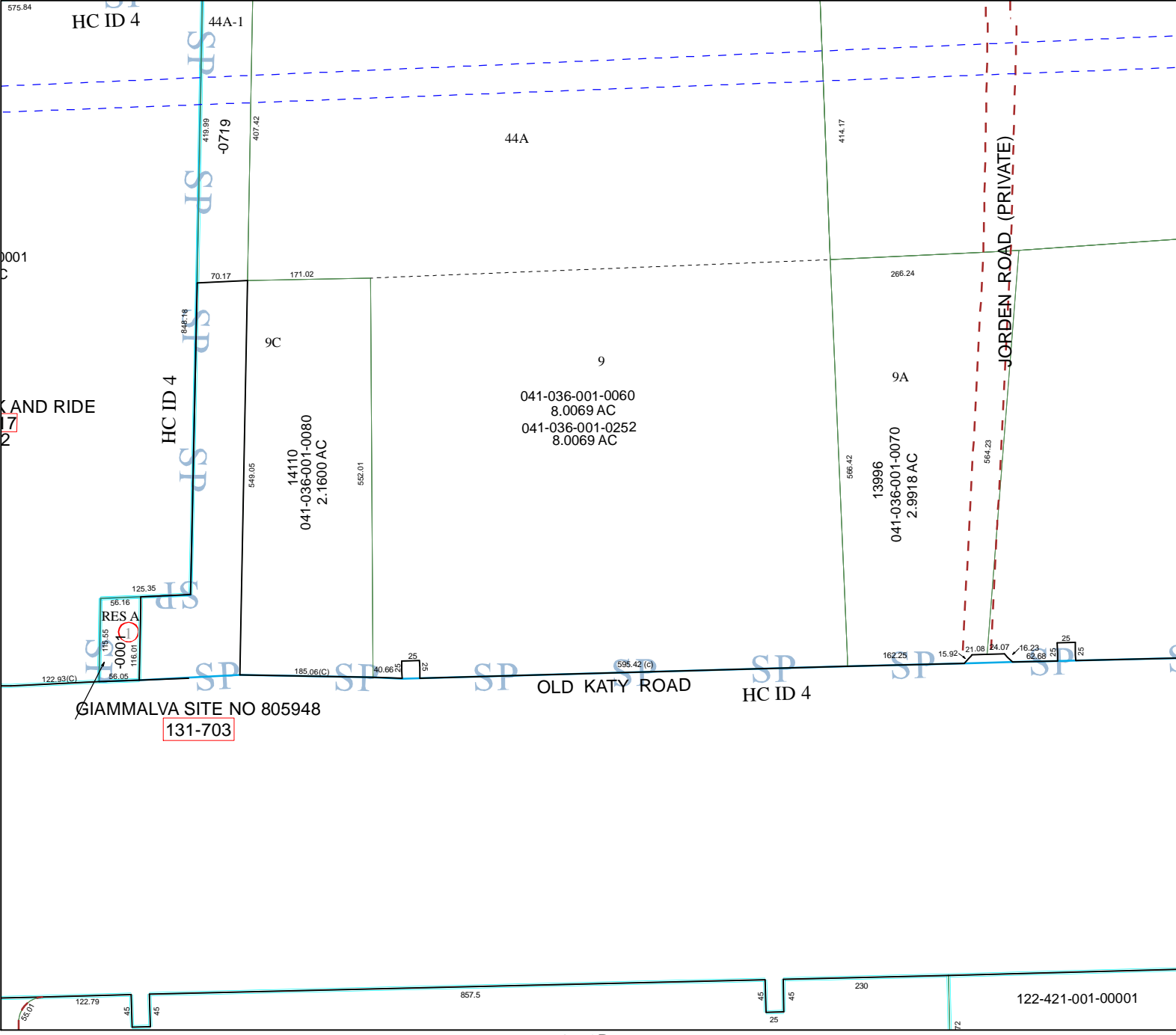


4758B9



Harris County Appraisal District

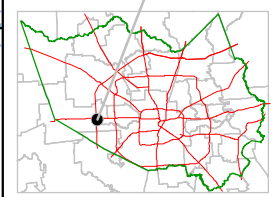


0 100 200
PUBLICATION DATE:
 8/12/2011

Geospatial or map data maintained by the Harris County Appraisal District is for informational purposes and may not have been prepared for or be suitable for legal, engineering, or surveying purposes. It does not represent an on-the-ground survey and only represents the approximate location of property boundaries.



MAP LOCATION



FACET 4758D

1	2	3	4
5	6	7	8
9	10	11	12

4758D5

HC ID 4

44A-1

419.99
-0719

407.42

44A

414.17

JORDEN ROAD (PRIVATE)

266.24

HC ID 4

9C

9

9A

041-036-001-0060
8.0069 AC
041-036-001-0252
8.0069 AC

13996
041-036-001-0070
2.9918 AC

14110
041-036-001-0080
2.1600 AC

K AND RIDE

4758C4

RES A

GIAMMALVA SITE NO 805948
131-703

OLD KATY ROAD

HC ID 4

122-421-001-00001

4758D2