

4756D8

4755B4

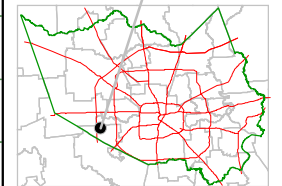
Harris County Appraisal District



0 100 200
PUBLICATION DATE:
1/20/2012

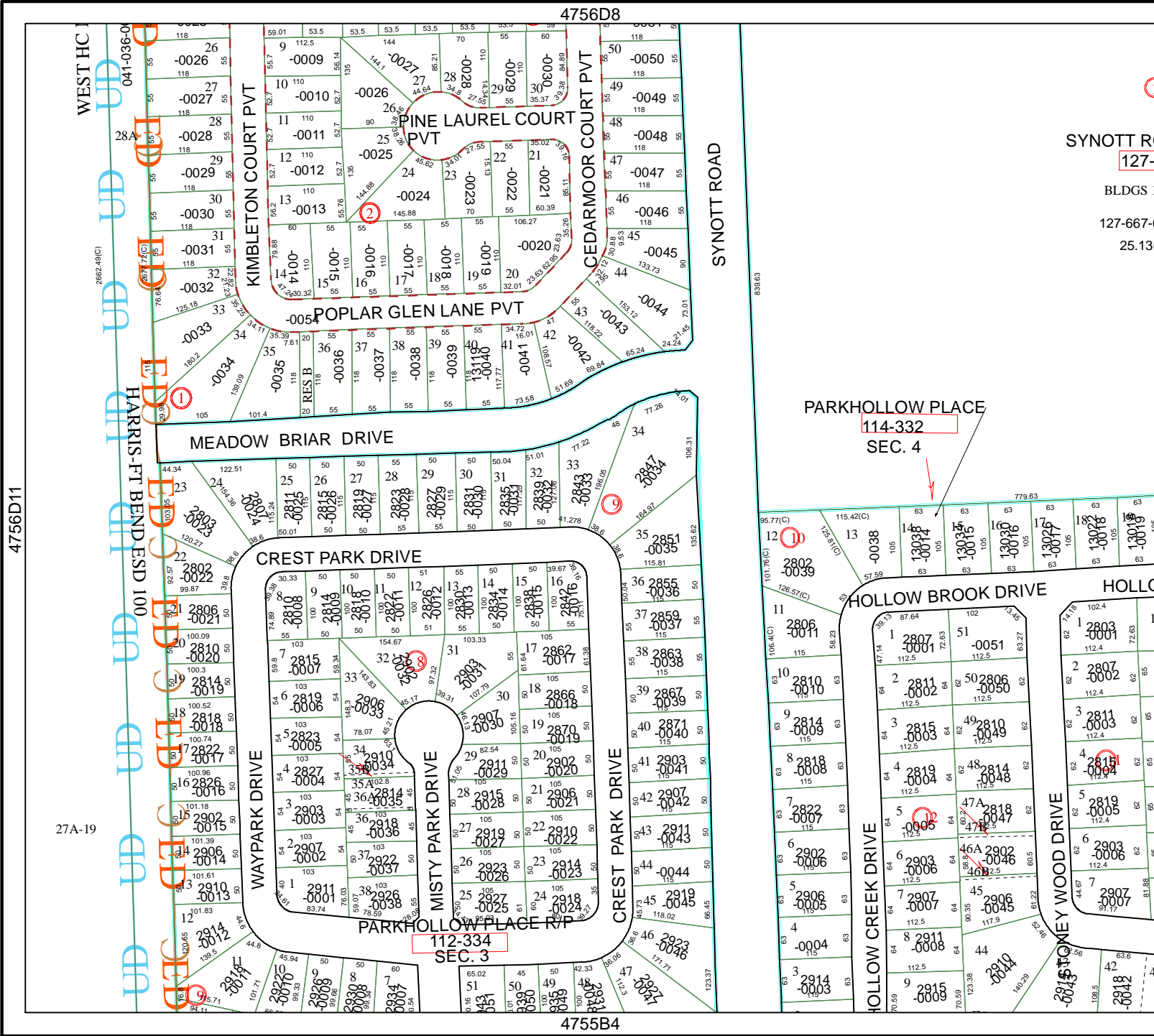
Geospatial or map data maintained by the Harris County Appraisal District is for informational purposes and may not have been prepared for or be suitable for legal, engineering, or surveying purposes. It does not represent an on-the-ground survey and only represents the approximate location of property boundaries.

MAP LOCATION



FACET 4756D

| | | | |
|---|----|----|----|
| 1 | 2 | 3 | 4 |
| 5 | 6 | 7 | 8 |
| 9 | 10 | 11 | 12 |



PARKHOLLOW PLACE
114-332
SEC. 4

SYNOTT ROAD
127-
BLDGS
127-667-
25.13

4856C9

4756D11

27A-19

