

4755A9

RES D2
15035
111-299-000-0071
5.4338 AC.

CLAYTON
111-299
SEC 2

RES D1
111-299-000-0062
6.5508 AC.

RES B 26
-00536
RES D
-0058

RES E

111-299-000-0069
5.5456 AC.

4655D4

Harris County Appraisal District

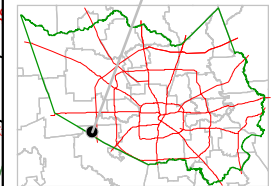


0 100 200

PUBLICATION DATE:
1/20/2012

Geospatial or map data maintained by the Harris County Appraisal District is for informational purposes and may not have been prepared for or be suitable for legal, engineering, or surveying purposes. It does not represent an on-the-ground survey and only represents the approximate location of property boundaries.

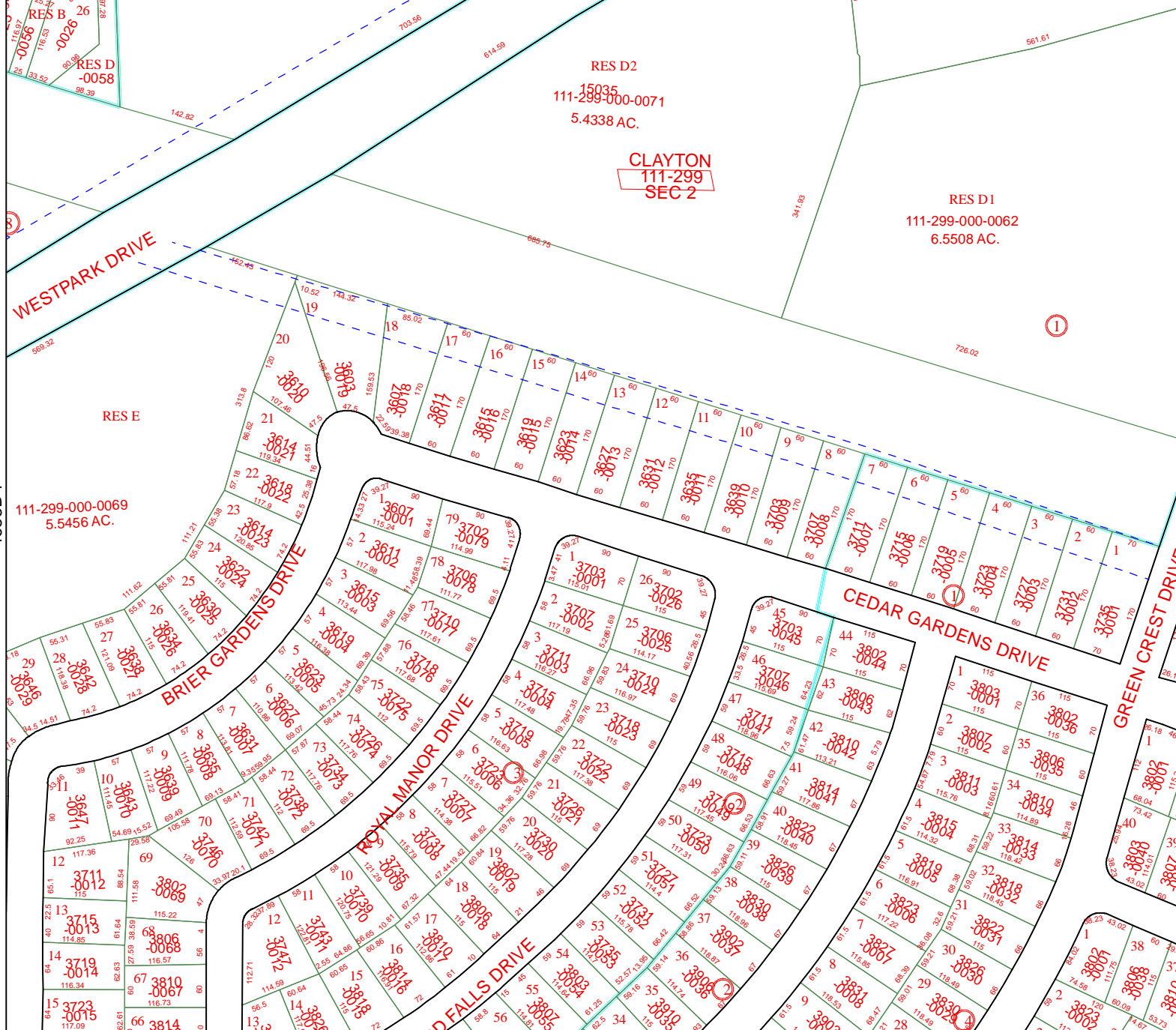
MAP LOCATION



FACET 4755C

1	2	3	4
5	6	7	8
9	10	11	12

4755C5



4755C2