

# Harris County Appraisal District

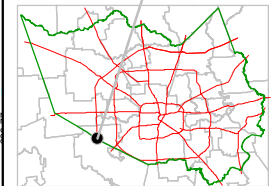


0 100 200

PUBLICATION DATE:  
1/20/2012

Geospatial or map data maintained by the Harris County Appraisal District is for informational purposes and may not have been prepared for or be suitable for legal, engineering, or surveying purposes. It does not represent an on-the-ground survey and only represents the approximate location of property boundaries.

MAP LOCATION



## FACET 4754D

1	2	3	4
5	6	7	8
9	10	11	12

4754B9

PAVILION  
115-941  
SEC. 2

RES C

RES C1

PAVILION POINT STREET

RES F

115-941-000-0005  
7.7558 AC

RES C

116-496-001-0003  
8.3266 AC

①

RES D

116-496-002-0001  
5.0068 AC.

RES E1

8150  
116-496-002-0004  
6.3751 AC.

②

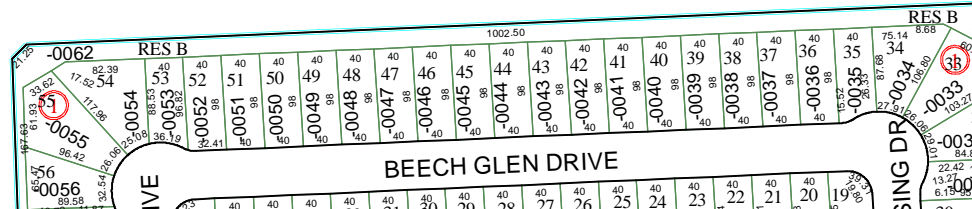
RES E

116-496-002-0002  
4.6237 AC.

BEECHNUT CROSSING CENTER  
116-496

BEECHNUT STREET

1B



4754D5

4754C4

4754D2

