

4754C3

BEECHNUT STREET

WEST BEECHNUT PLAZA
116-638

PLAZA RESERVE B R/P
6-638

116-638-001-0002
3.5197 AC

RES A9

14629
116-638-000-0015
5.9240 AC

14625
116-638-000-0014
5.0974 AC

RES A6
14601-0012

RES A3
14615
116-638-000-0009
2.0990 AC

MISSION BEND M.U.D. NO. 1

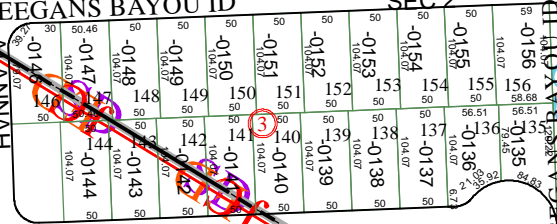
N MISSION GLEN MUD

KINGSBRIDGE COURT
124-156

AUTOPARK WAY

4754C6

ALANNAH LAGOON DR



W KEEGANS BAYOU ID

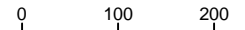
RES G

1K

8500
043-082-000-0012
10.5300 AC

4754C11

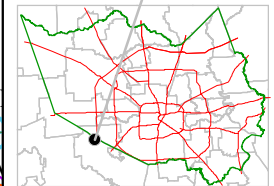
Harris County Appraisal District



PUBLICATION DATE:
1/20/2012

Geospatial or map data maintained by the Harris County Appraisal District is for informational purposes and may not have been prepared for or be suitable for legal, engineering, or surveying purposes. It does not represent an on-the-ground survey and only represents the approximate location of property boundaries.

MAP LOCATION



FACET 4754C

1	2	3	4
5	6	7	8
9	10	11	12