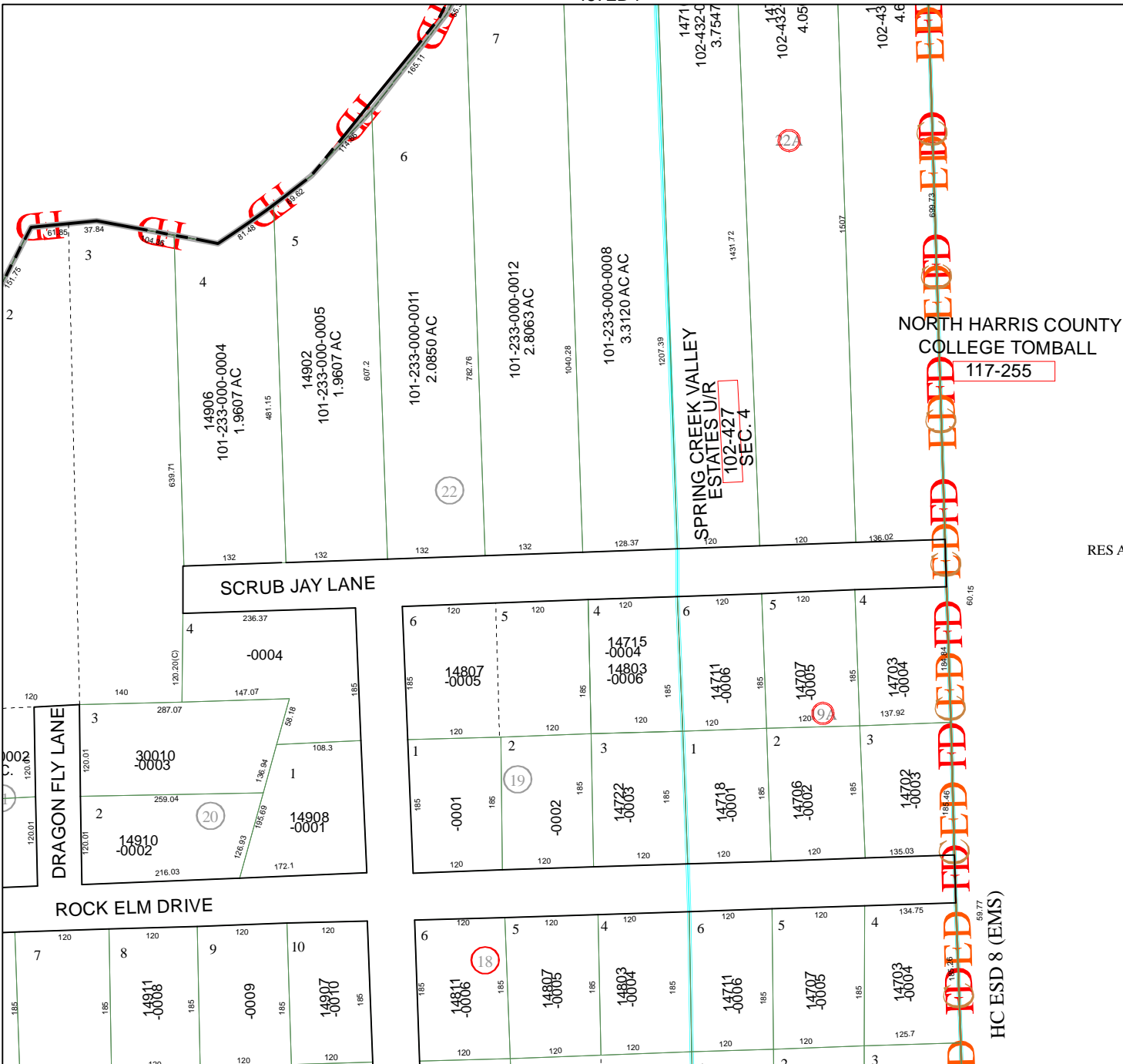


4672D4

4672D12

4672D7



NORTH HARRIS COUNTY COLLEGE TOMBALL
117-255

RES A

HC ESD 8 (EMS)

Harris County Appraisal District

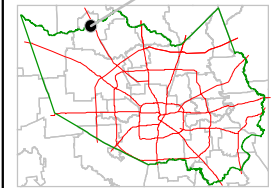


0 100 200
PUBLICATION DATE:
8/15/2011

Geospatial or map data maintained by the Harris County Appraisal District is for informational purposes and may not have been prepared for or be suitable for legal, engineering, or surveying purposes. It does not represent an on-the-ground survey and only represents the approximate location of property boundaries.



MAP LOCATION



FACET 4672D

1	2	3	4
5	6	7	8
9	10	11	12

4772C5