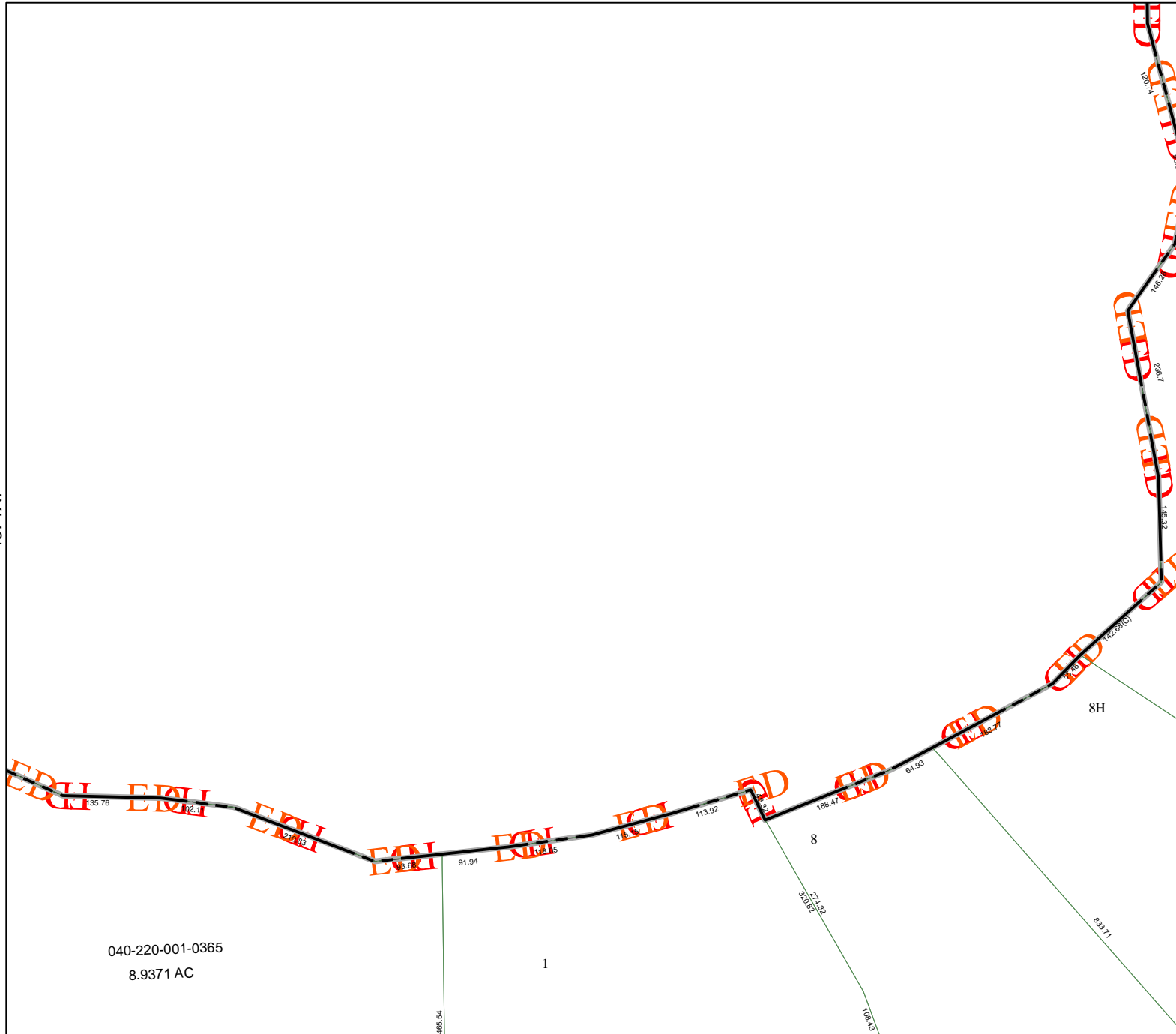


4671A4

4671A7

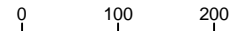


040-220-001-0365
8.9371 AC

1

4671A12

Harris County Appraisal District

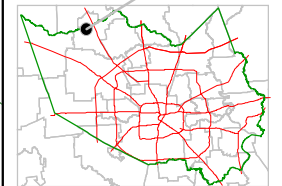


PUBLICATION DATE:
8/1/2011

Geospatial or map data maintained by the Harris County Appraisal District is for informational purposes and may **not** have been prepared for or be suitable for legal, engineering, or surveying purposes. It does **not** represent an on-the-ground survey and only represents the approximate location of property boundaries.



MAP LOCATION



FACET 4671A

1	2	3	4
5	6	7	8
9	10	11	12

4671B5

8H

8