

Harris County Appraisal District

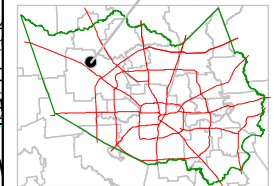


0 100 200

PUBLICATION DATE:
12/21/2011

Geospatial or map data maintained by the Harris County Appraisal District is for informational purposes and may not be prepared for or be suitable for legal, engineering, or surveying purposes. It does not represent an on-the-ground survey and only represents the approximate location of property boundaries.

MAP LOCATION



FACET 4666D

1	2	3	4
5	6	7	8
9	10	11	12

4666B12

COLES CROSSING
126-270
SEC 31

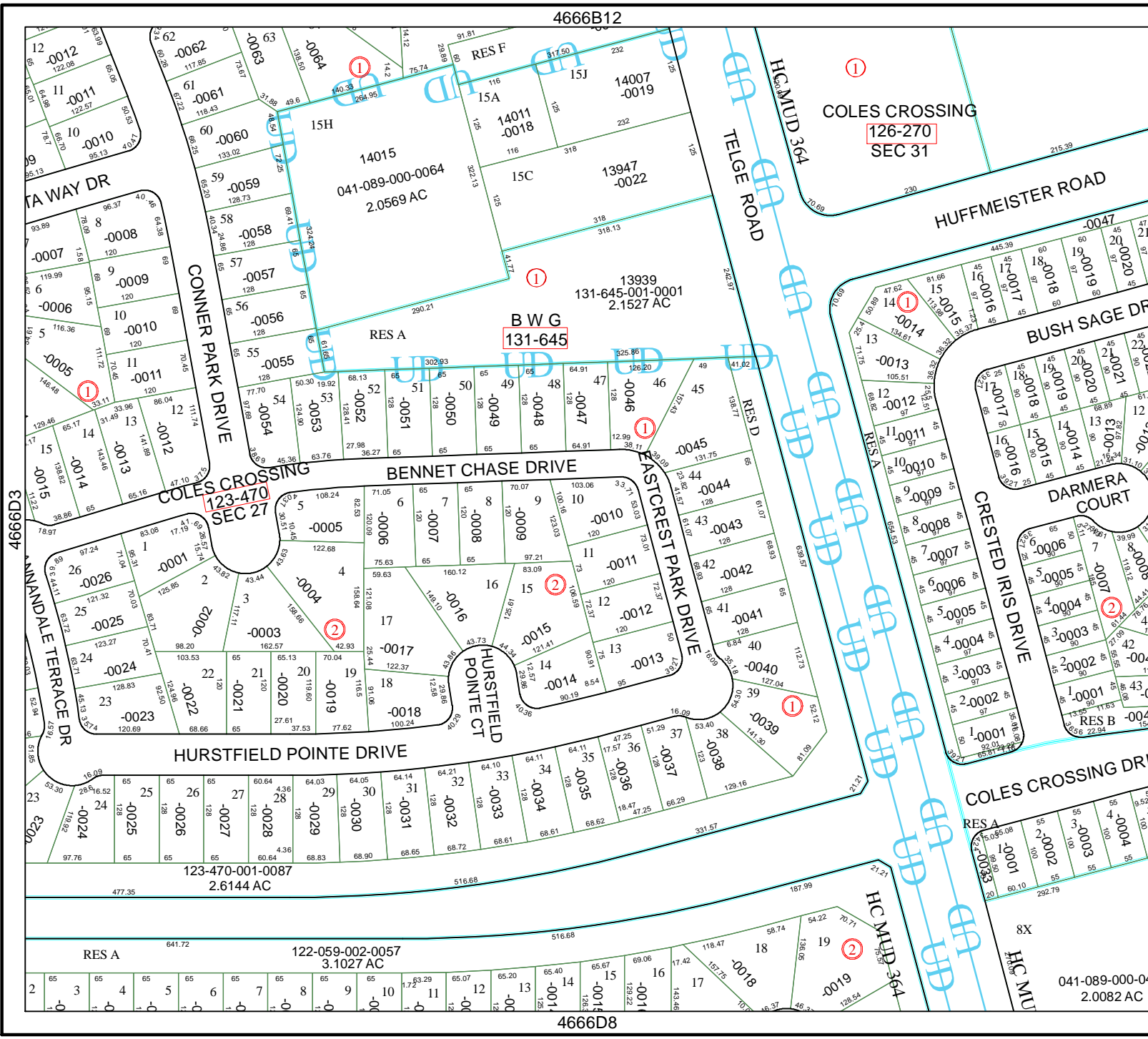
B W G
131-645

COLES CROSSING
123-470
SEC 27

123-470-001-0087
2.6144 AC

122-059-002-0057
3.1027 AC

4666D8



4766C1

4666D3



8X

041-089-000-04
2.0082 AC