

Harris County Appraisal District

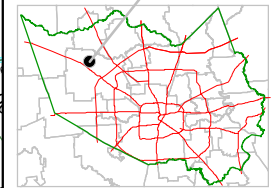


0 100 200

PUBLICATION DATE:
8/15/2011

Geospatial or map data maintained by the Harris County Appraisal District is for informational purposes and may not have been prepared for or be suitable for legal, engineering, or surveying purposes. It does not represent an on-the-ground survey and only represents the approximate location of property boundaries.

MAP LOCATION

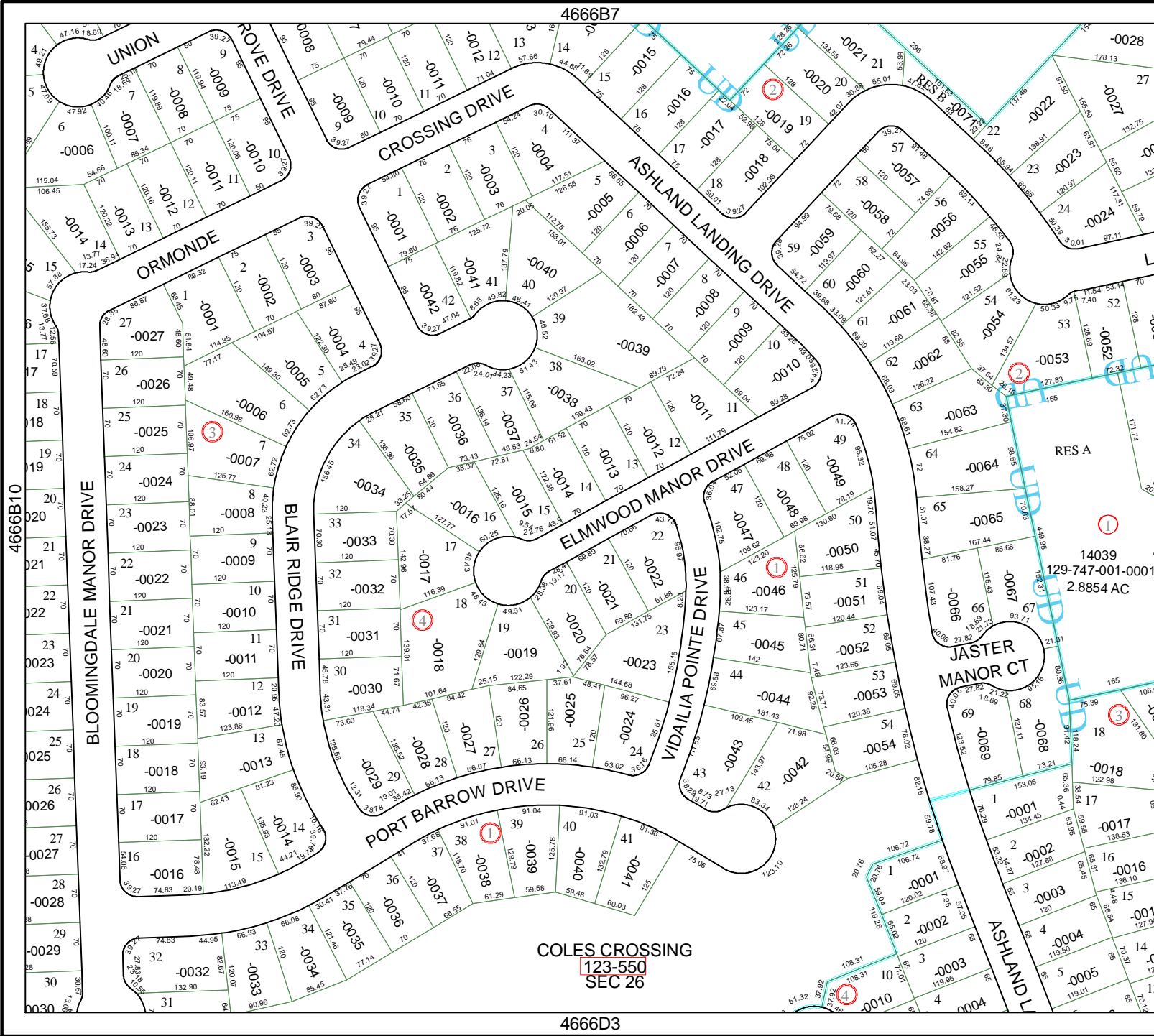


FACET 4666B

1	2	3	4
5	6	7	8
9	10	11	12

4666B7

4666D3



4666B10

4666B12

COLES CROSSING
123-550
SEC 26