

Harris County Appraisal District

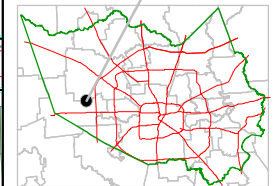


0 100 200

PUBLICATION DATE:
8/18/2011

Geospatial or map data maintained by the Harris County Appraisal District is for informational purposes and may not be suitable for legal, engineering, or surveying purposes. It does not represent an on-the-ground survey and only represents the approximate location of property boundaries.

MAP LOCATION

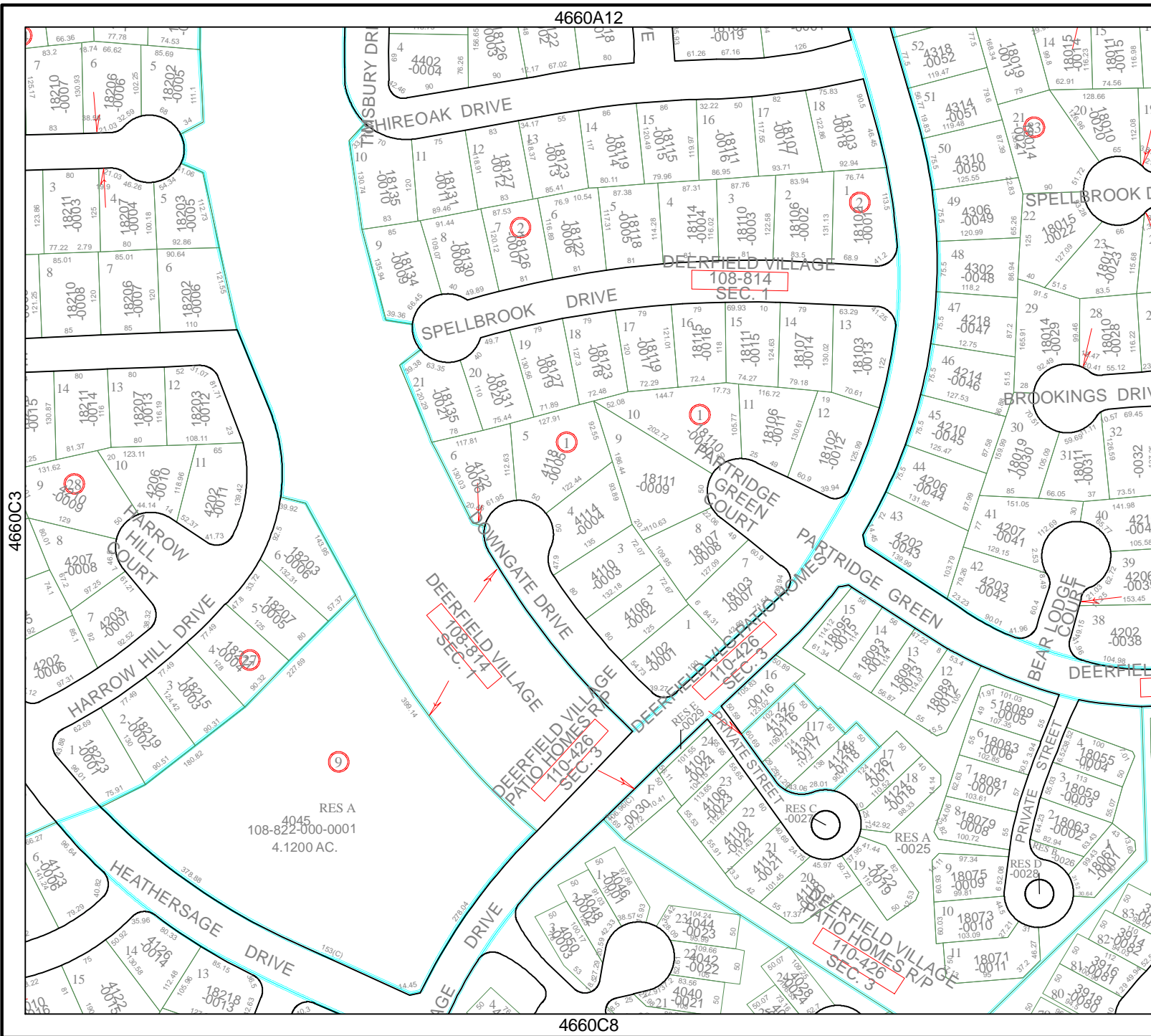


FACET 4660C

1	2	3	4
5	6	7	8
9	10	11	12

4660A12

4660C8



RES A
108-822-000-0001
4.1200 AC.

4660C3

4660D1

