

4567A11

40.3813 AC

IH

046-172-000-0019

10.0035 AC

4

4567C2

Harris County Appraisal District



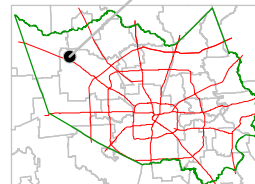
0 100 200

PUBLICATION DATE:
8/12/2011

Geospatial or map data maintained by the Harris County Appraisal District is for informational purposes and may not have been prepared for or be suitable for legal, engineering, or surveying purposes. It does not represent an on-the-ground survey and only represents the approximate location of property boundaries.

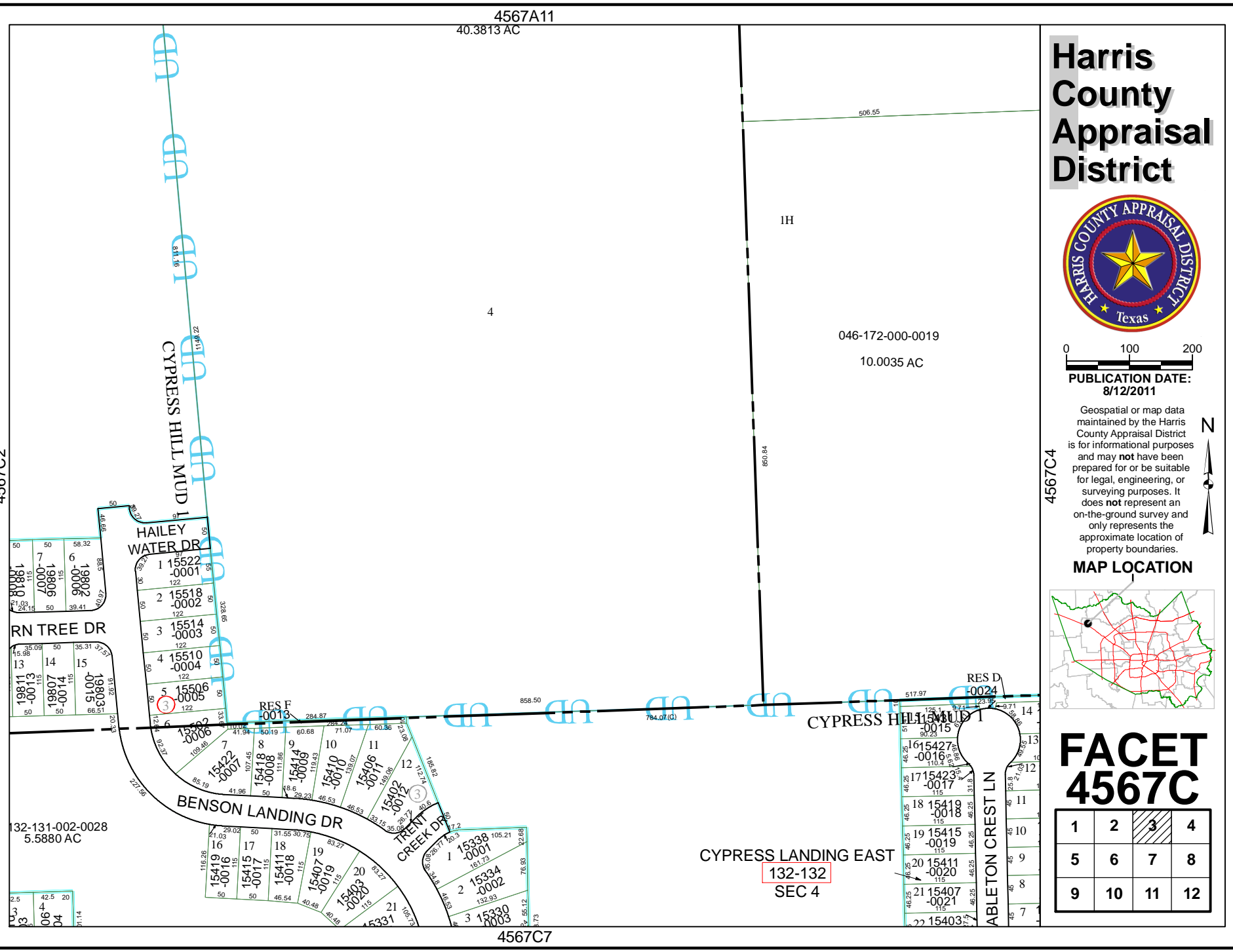


MAP LOCATION



FACET 4567C

1	2	3	4
5	6	7	8
9	10	11	12



CYPRESS LANDING EAST
132-132
SEC 4

4567C7