

4567C8

5B-12

5B-1A

044-130-000-0111  
10.4495 AC

4566A4

# Harris County Appraisal District



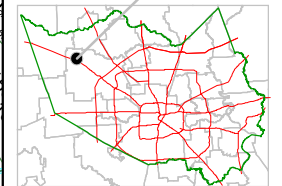
0 100 200

PUBLICATION DATE:  
8/12/2011

Geospatial or map data maintained by the Harris County Appraisal District is for informational purposes and may not be prepared for or be suitable for legal, engineering, or surveying purposes. It does not represent an on-the-ground survey and only represents the approximate location of property boundaries.

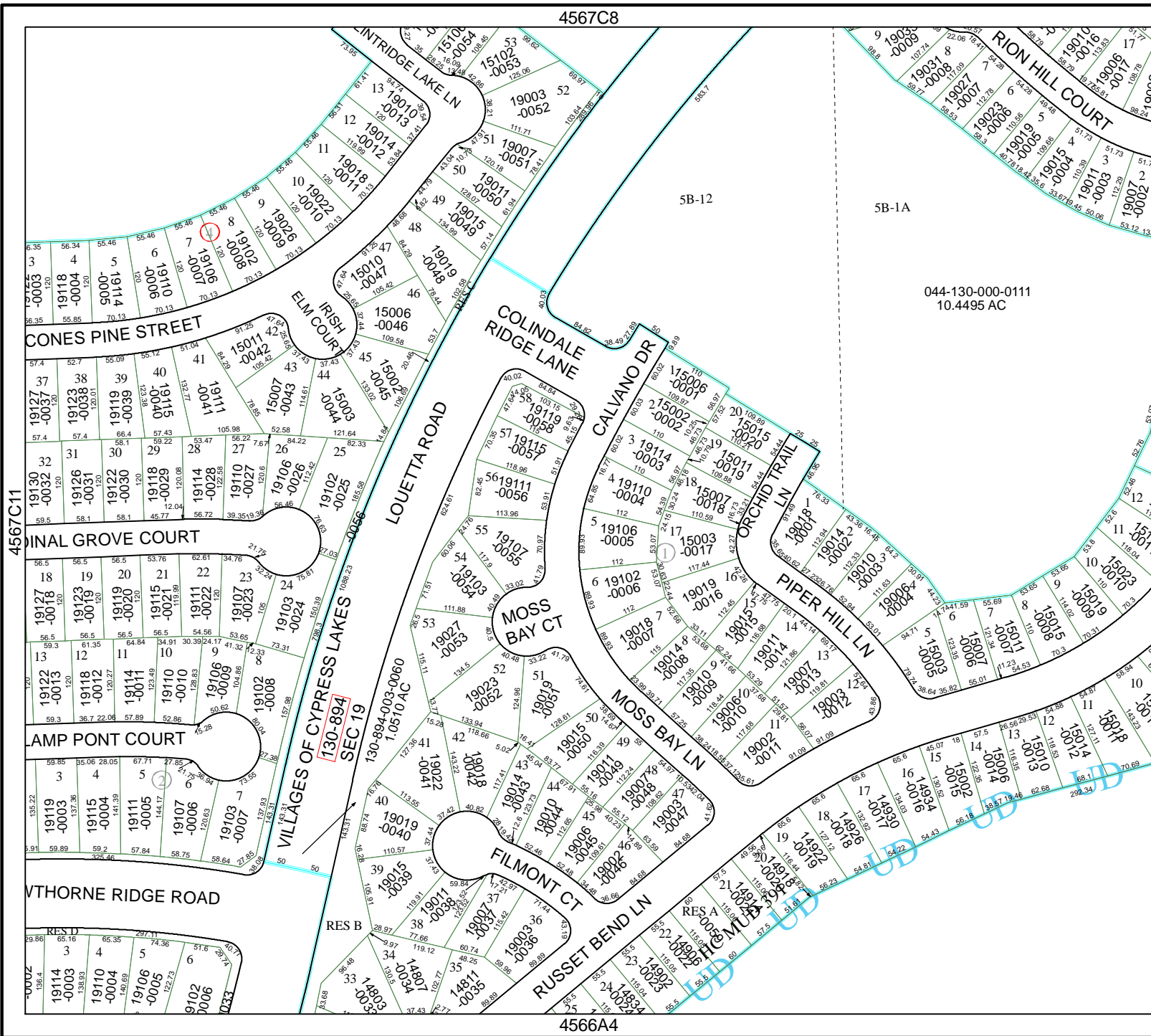


MAP LOCATION



## FACET 4567C

1	2	3	4
5	6	7	8
9	10	11	12



4567C11

4567D9

RES D

19114 -0003  
19110 -0004  
19106 -0005  
19102 -0006

RES B

19003 -0006  
19001 -0007  
19002 -0008

RES A

19005 -0009  
19004 -0010  
19003 -0011

RES C

19006 -0012  
19007 -0013  
19008 -0014

RES E

19009 -0015  
19010 -0016  
19011 -0017

RES F

19012 -0018  
19013 -0019  
19014 -0020