

Harris County Appraisal District

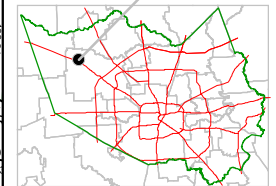


0 100 200

PUBLICATION DATE:
8/15/2011

Geospatial or map data maintained by the Harris County Appraisal District is for informational purposes and may not be prepared for or be suitable for legal, engineering, or surveying purposes. It does not represent an on-the-ground survey and only represents the approximate location of property boundaries.

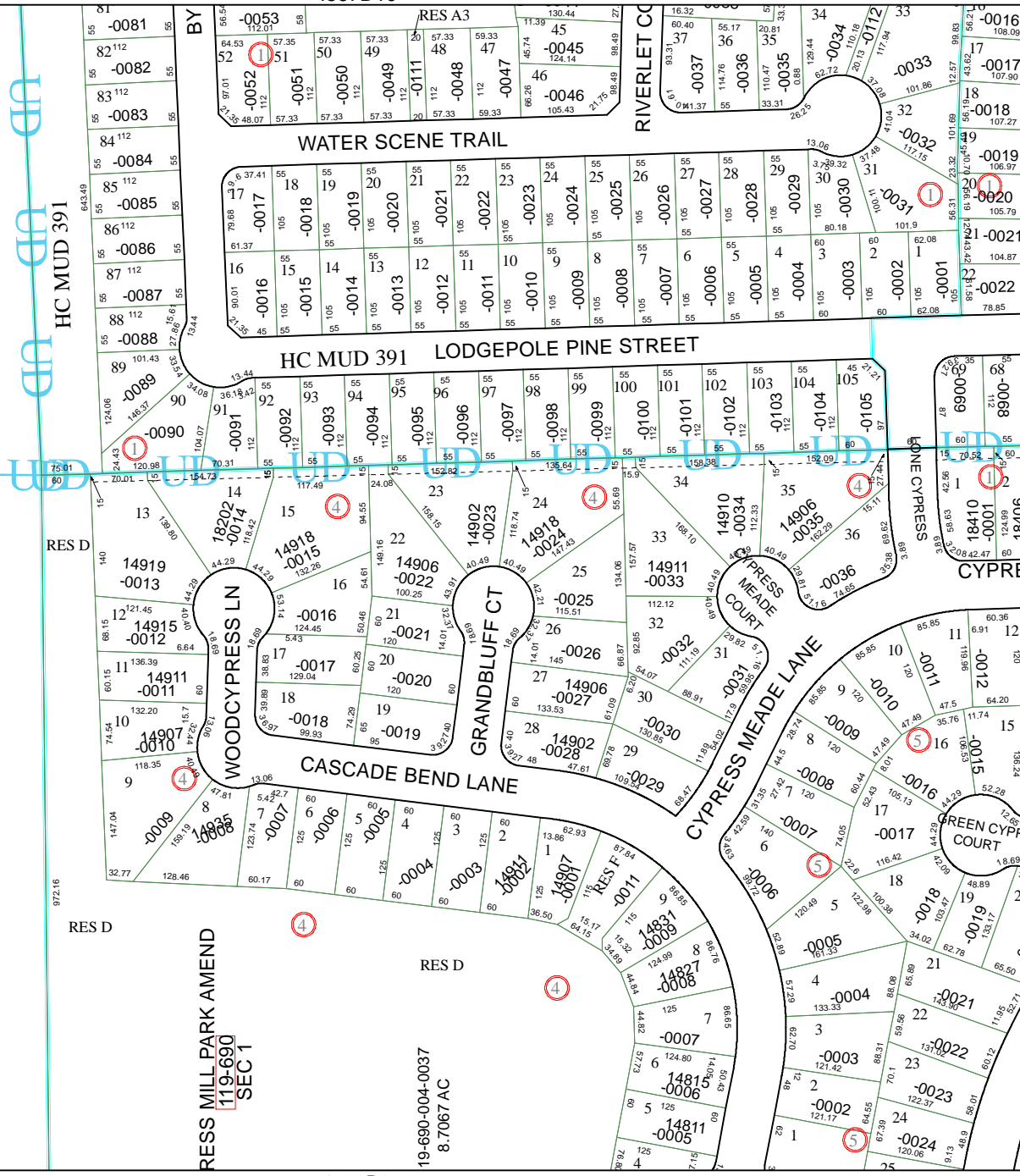
MAP LOCATION



FACET 4566B

1	2	3	4
5	6	7	8
9	10	11	12

4567D10



4566B6

4566B1

HC MUD 391

RES D

RES D

RESS MILL PARK AMEND
119-690
SEC 1

19-690-004-0037
8.7067 AC

4566B3