

4470B6

4470B9

Harris County Appraisal District

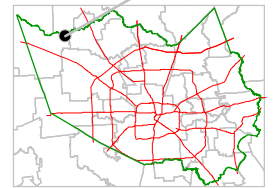


0 100 200
PUBLICATION DATE:
2/2/2012

Geospatial or map data maintained by the Harris County Appraisal District is for informational purposes and may **not** have been prepared for or be suitable for legal, engineering, or surveying purposes. It does **not** represent an on-the-ground survey and only represents the approximate location of property boundaries.



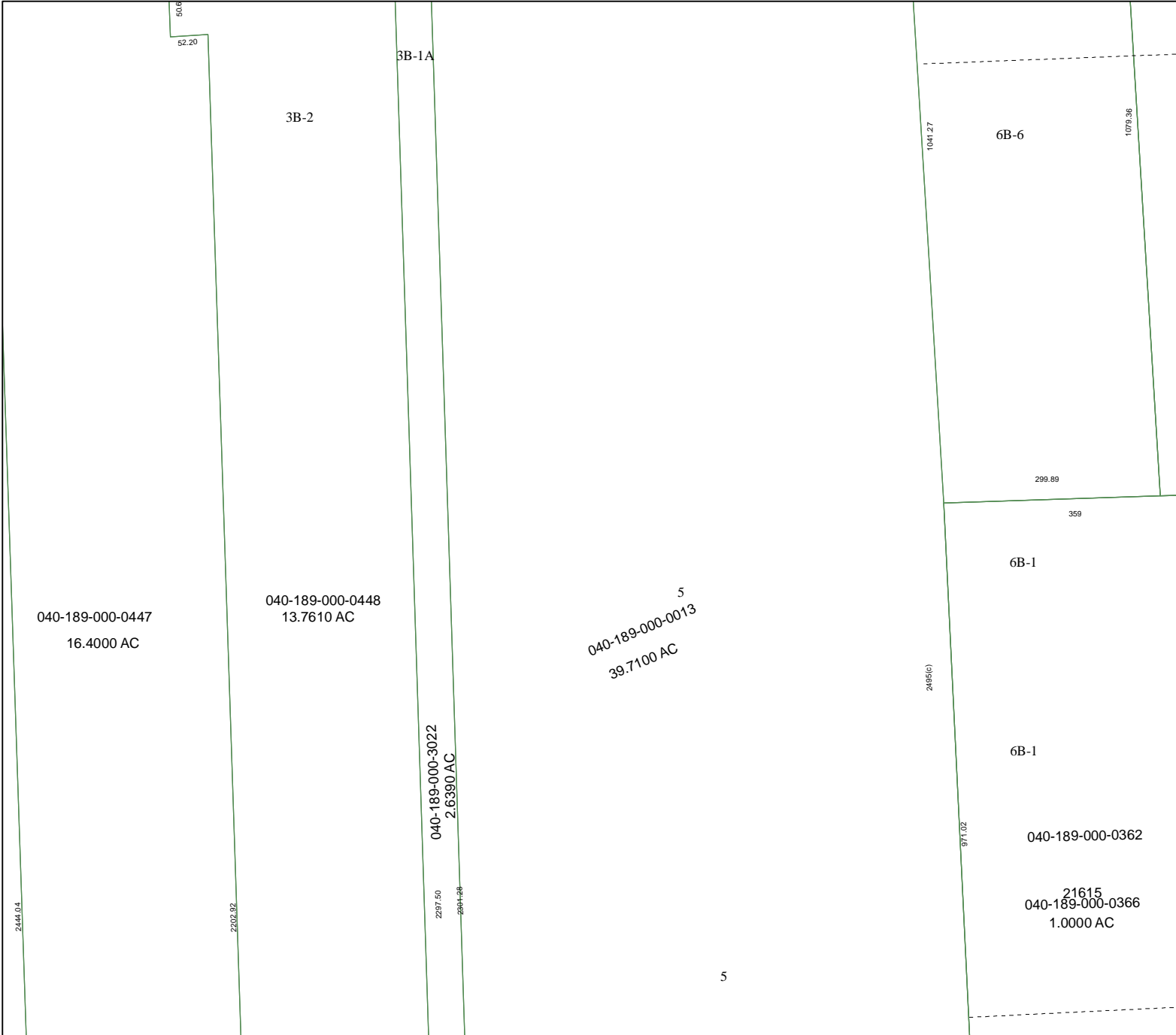
MAP LOCATION



FACET 4470B

| | | | |
|---|----|----|----|
| 1 | 2 | 3 | 4 |
| 5 | 6 | 7 | 8 |
| 9 | 10 | 11 | 12 |

4470D2



4470B11

1041.27

1079.36

299.89

359

2495(c)

977.02

2444.04

50.6

52.20

3B-1A

3B-2

040-189-000-0447
16.4000 AC

040-189-000-0448
13.7610 AC

5
040-189-000-0013
39.7100 AC

040-189-000-3022
2.6390 AC

2397.50
2694.28

040-189-000-0362

21615
040-189-000-0366
1.0000 AC

5