

Harris County Appraisal District

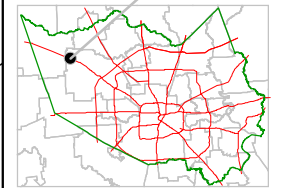


0 100 200
PUBLICATION DATE:
 12/21/2011

Geospatial or map data maintained by the Harris County Appraisal District is for informational purposes and may **not** have been prepared for or be suitable for legal, engineering, or surveying purposes. It does **not** represent an on-the-ground survey and only represents the approximate location of property boundaries.

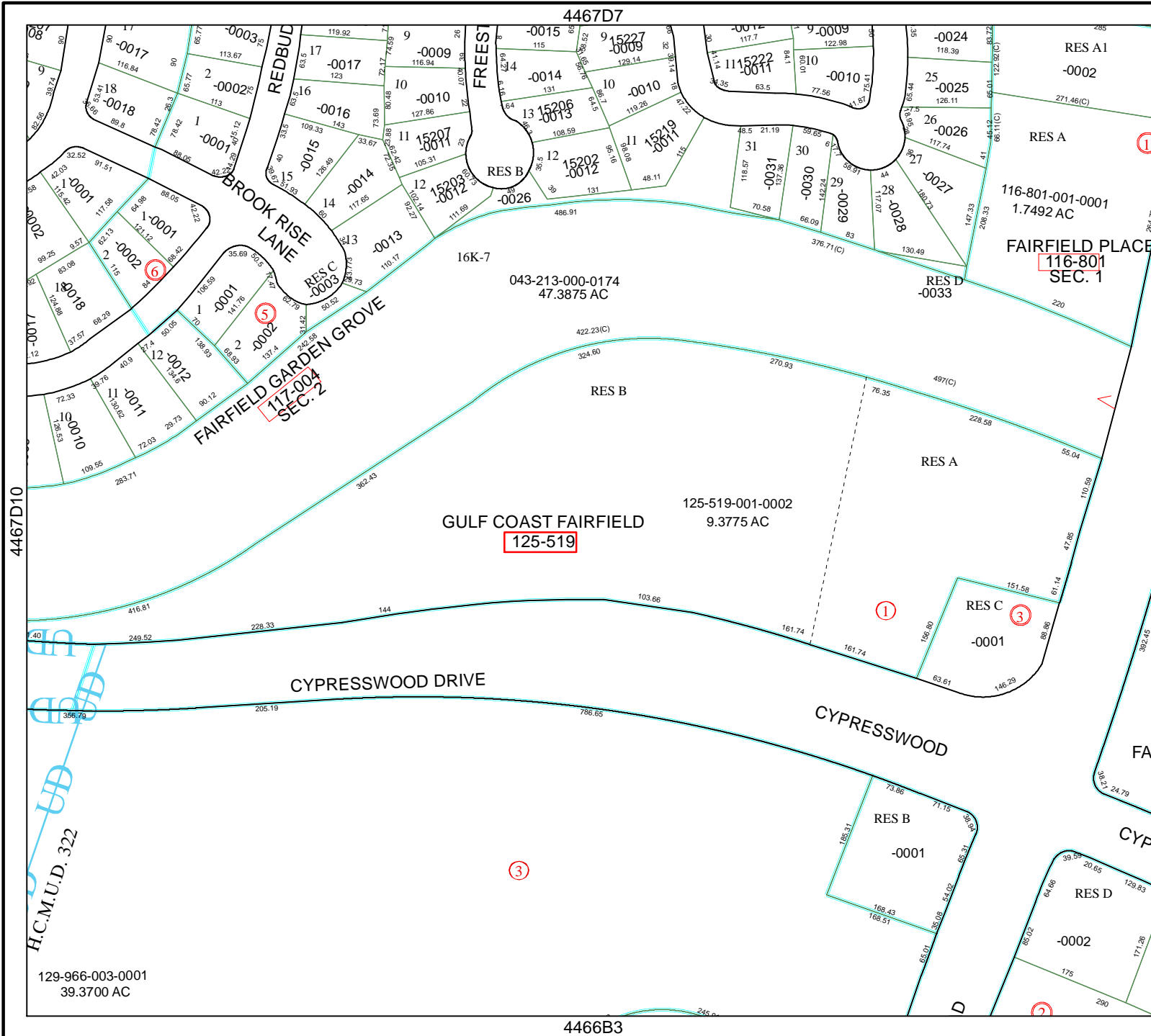


MAP LOCATION



FACET 4467D

1	2	3	4
5	6	7	8
9	10	11	12



129-966-003-0001
 39.3700 AC

4466B3