

4371D6

Harris County Appraisal District

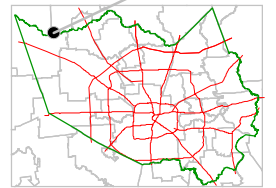


0 100 200
PUBLICATION DATE:
10/1/2011

Geospatial or map data maintained by the Harris County Appraisal District is for informational purposes and may **not** have been prepared for or be suitable for legal, engineering, or surveying purposes. It does **not** represent an on-the-ground survey and only represents the approximate location of property boundaries.



MAP LOCATION



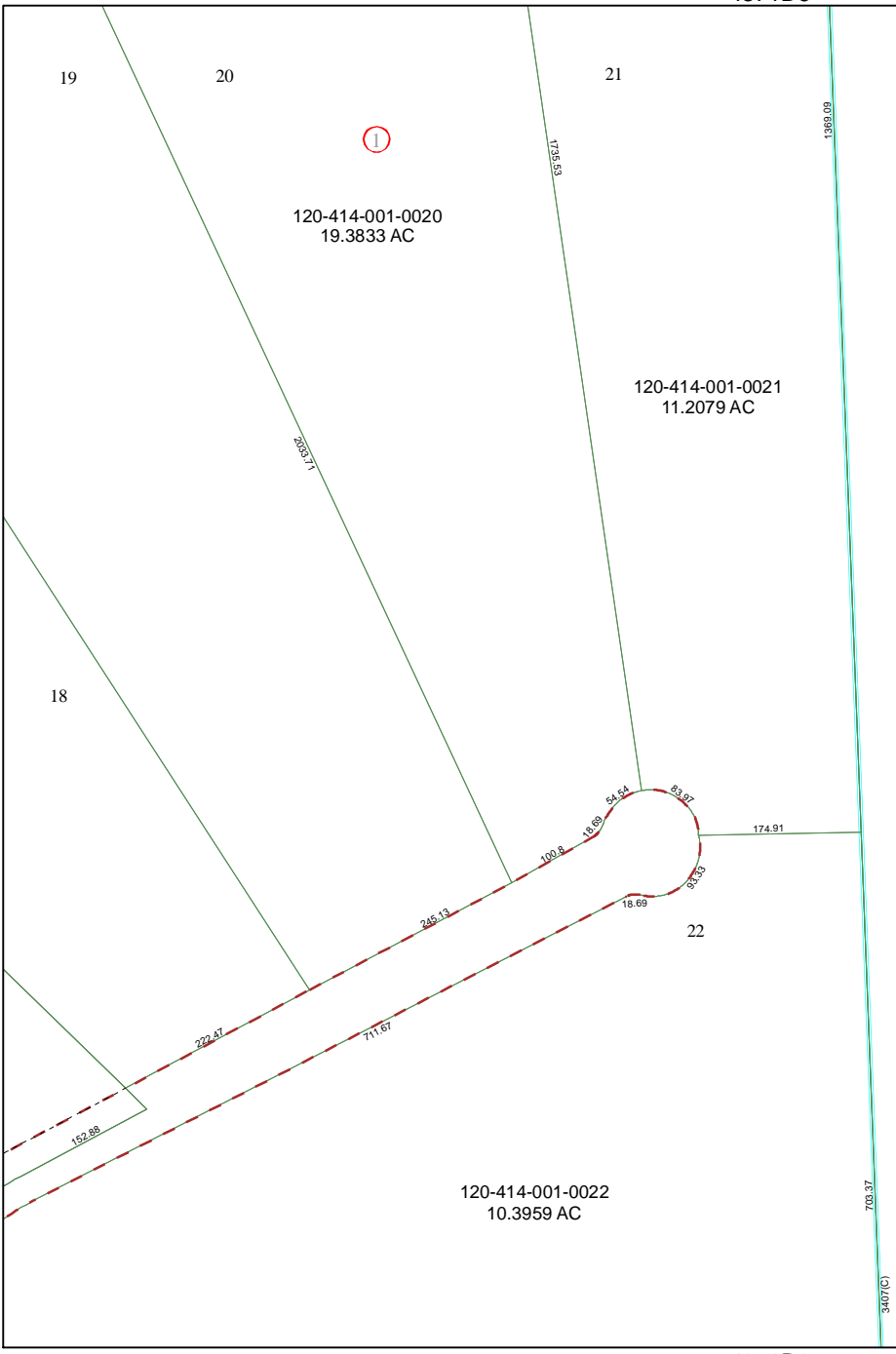
FACET 4371D

1	2	3	4
5	6	7	8
9	10	11	12

4370B2

4371D9

4371D11



10/1/2011

19

20

21

3

①

120-414-001-0020
19.3833 AC

120-414-001-0021
11.2079 AC

18

22

120-414-001-0022
10.3959 AC