

4370B11

Harris County Appraisal District

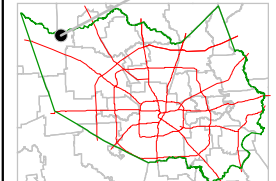


PUBLICATION DATE:
9/22/2011

Geospatial or map data maintained by the Harris County Appraisal District is for informational purposes and may **not** have been prepared for or be suitable for legal, engineering, or surveying purposes. It does **not** represent an on-the-ground survey and only represents the approximate location of property boundaries.



MAP LOCATION



FACET 4370D

| | | | |
|---|----|----|----|
| 1 | 2 | 3 | 4 |
| 5 | 6 | 7 | 8 |
| 9 | 10 | 11 | 12 |

041-019-000-0146
88.9310 AC

21

20

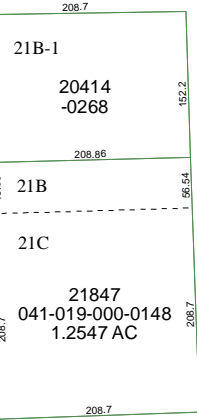
5C

5

1068

2410(C)

BAUER ROAD



4370D7

4370D2