

4370C7

21C-1C

21C-8

042-265-000-0059
4.0090 AC

042-265-000-0077
4.0000 AC

21C-1

042-265-000-0037
5.1894 AC

BECKER ROAD

Harris County Appraisal District



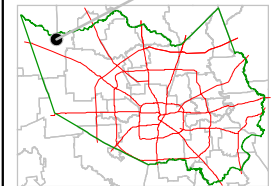
0 100 200

PUBLICATION DATE:
8/15/2011

Geospatial or map data maintained by the Harris County Appraisal District is for informational purposes and may not be prepared for or be suitable for legal, engineering, or surveying purposes. It does not represent an on-the-ground survey and only represents the approximate location of property boundaries.



MAP LOCATION

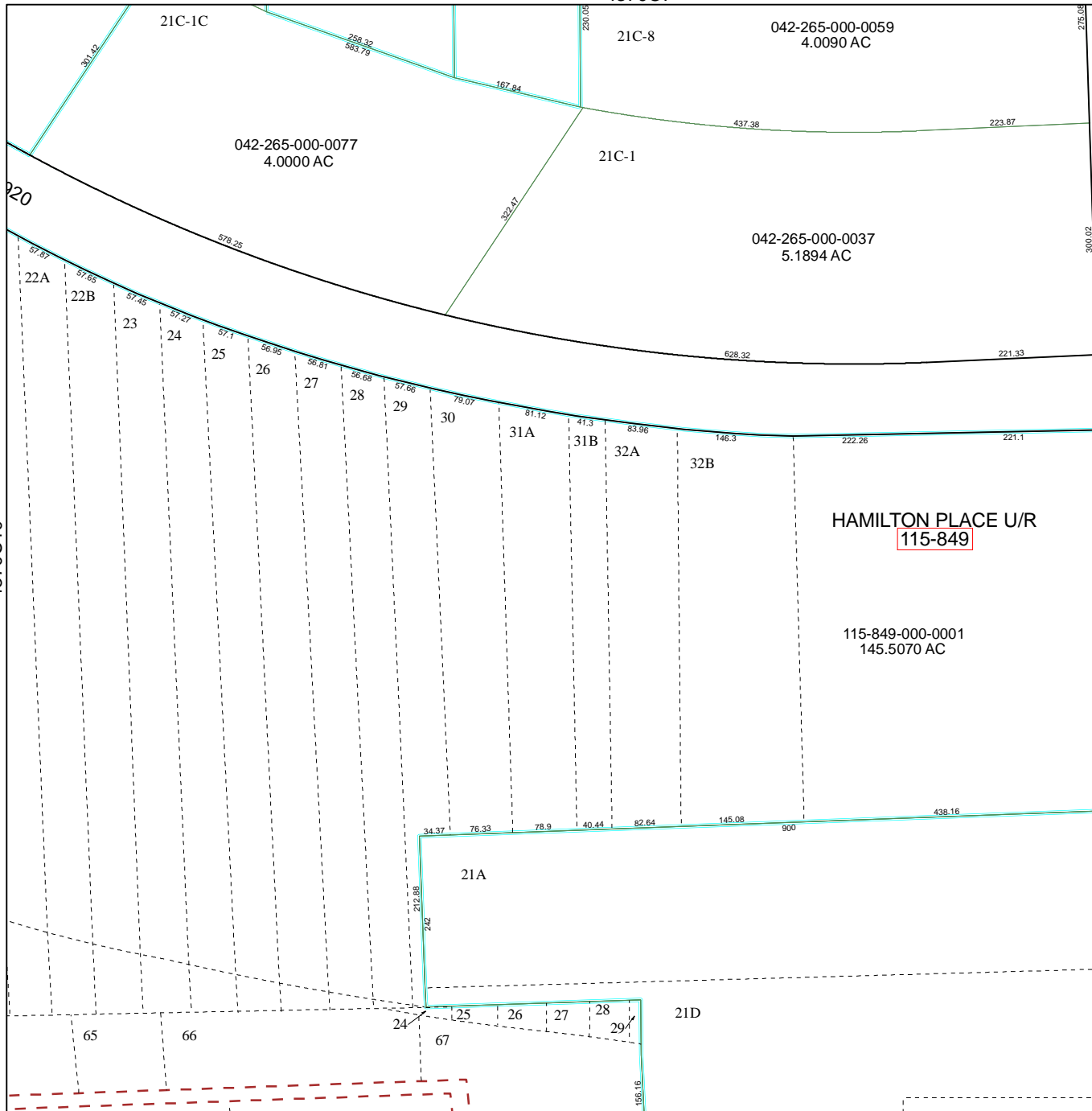


FACET 4370C

1	2	3	4
5	6	7	8
9	10	11	12

4369A3

4370C10



HAMILTON PLACE U/R
115-849

115-849-000-0001
145.5070 AC

24D

4370C12

1092

242

463.8

438.16

900

145.08

82.64

40.44

78.9

76.33

34.37

242

212.88

242

212.88

242

212.88

242

212.88

242

900

145.08

82.64

40.44

78.9

76.33

34.37

242

212.88

242

212.88

242

212.88

242

212.88

242

212.88

242

212.88

242

212.88

900

145.08

82.64

40.44

78.9

76.33

34.37

242

212.88

242

212.88

242

212.88

242

212.88

242

212.88

242

212.88

242

212.88

900

145.08

82.64

40.44

78.9

76.33

34.37

242

212.88

242

212.88

242

212.88

242

212.88

242

212.88

242

212.88

242

212.88

900

145.08

82.64

40.44

78.9

76.33

34.37

242

212.88

242

212.88

242

212.88

242

212.88

242

212.88

242

212.88

242

212.88

900

145.08

82.64

40.44

78.9

76.33

34.37

242

212.88

242

212.88

242

212.88

242

212.88

242

212.88

242

212.88

242

212.88

900

145.08

82.64

40.44

78.9

76.33

34.37

242

212.88

242

212.88

242

212.88

242

212.88

242

212.88

242

212.88

242

212.88

900

145.08

82.64

40.44

78.9

76.33

34.37

242

212.88

242

212.88

242

212.88

242

212.88

242

212.88

242

212.88

242

212.88

900

145.08

82.64

40.44

78.9

76.33

34.37

242

212.88

242

212.88

242

212.88

242

212.88

242

212.88

242

212.88

242

212.88

900

145.08

82.64

40.44

78.9

76.33

34.37

242

212.88

242

212.88

242

212.88

242

212.88

242

212.88

242

212.88

242

212.88

900

145.08

82.64

40.44

78.9

76.33

34.37

242

212.88

242

212.88

242

212.88

242

212.88

242

212.88

242

212.88

242

212.88

900

145.08

82.64

40.44

78.9

76.33

34.37

242

212.88

242

212.88

242

212.88

242

212.88

242

212.88

242

212.88

242

212.88

900

145.08

82.64

40.44

78.9

76.33

34.37

242

212.88

242

212.88

242

212.88

242

212.88

242

212.88

242

212.88

242

212.88

900

145.08

82.64

40.44

78.9

76.33

34.37

242

212.88

242

212.88

242

212.88

242

212.88

242