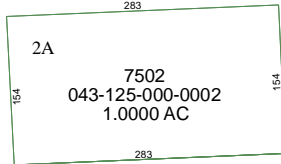


4262D4

4262D7

KATY HOCKLEY ROAD



3

4262D12

# Harris County Appraisal District



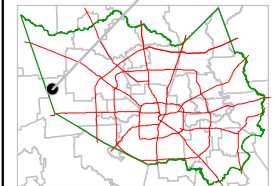
PUBLICATION DATE:  
8/12/2011

Geospatial or map data maintained by the Harris County Appraisal District is for informational purposes and may **not** have been prepared for or be suitable for legal, engineering, or surveying purposes. It does **not** represent an on-the-ground survey and only represents the approximate location of property boundaries.



4362C5

### MAP LOCATION



## FACET 4262D

1	2	3	4
5	6	7	8
9	10	11	12