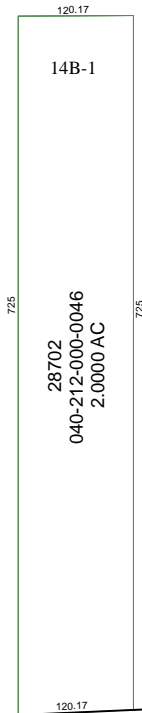


4171B2

14B

4171B5



3402.8

120.17

601.39

593.93

4171B10

Harris County Appraisal District



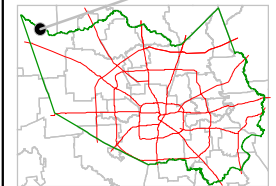
PUBLICATION DATE:
8/15/2011

Geospatial or map data maintained by the Harris County Appraisal District is for informational purposes and may **not** have been prepared for or be suitable for legal, engineering, or surveying purposes. It does **not** represent an on-the-ground survey and only represents the approximate location of property boundaries.



4171B7

MAP LOCATION



FACET 4171B

1	2	3	4
5	6	7	8
9	10	11	12