

4170D8

4170D11

# Harris County Appraisal District



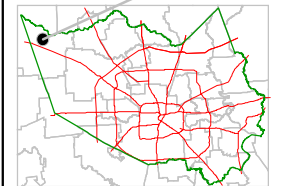
0 100 200

PUBLICATION DATE:  
8/15/2011

Geospatial or map data maintained by the Harris County Appraisal District is for informational purposes and may **not** have been prepared for or be suitable for legal, engineering, or surveying purposes. It does **not** represent an on-the-ground survey and only represents the approximate location of property boundaries.



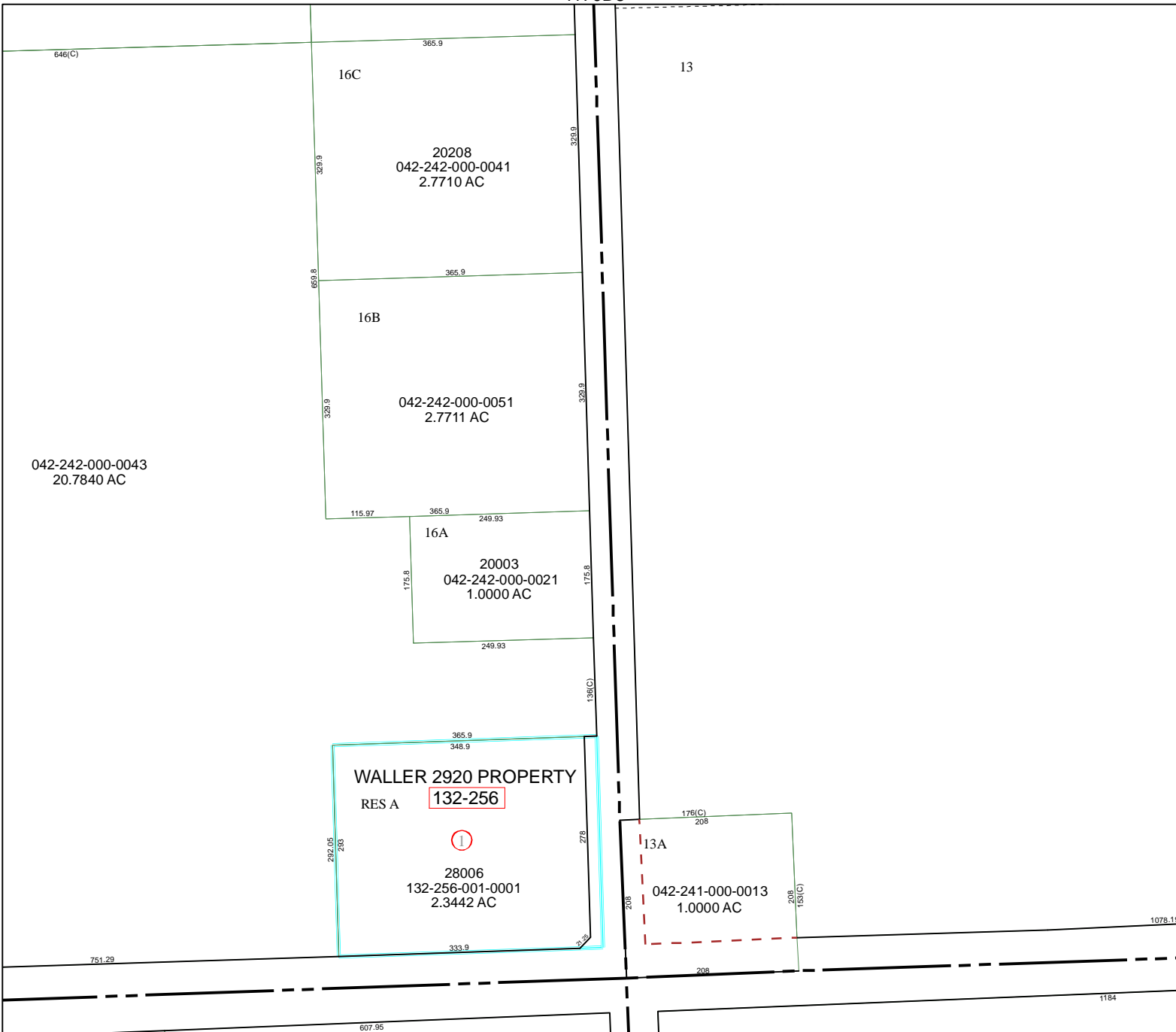
### MAP LOCATION



# FACET 4170D

1	2	3	4
5	6	7	8
9	10	11	12

4169B4



4270C9

1078.19

1184

607.95

751.29

042-242-000-0043  
20.7840 AC

20208  
042-242-000-0041  
2.7710 AC

042-242-000-0051  
2.7711 AC

20003  
042-242-000-0021  
1.0000 AC

WALLER 2920 PROPERTY  
RES A 132-256

28006  
132-256-001-0001  
2.3442 AC

13A  
042-241-000-0013  
1.0000 AC