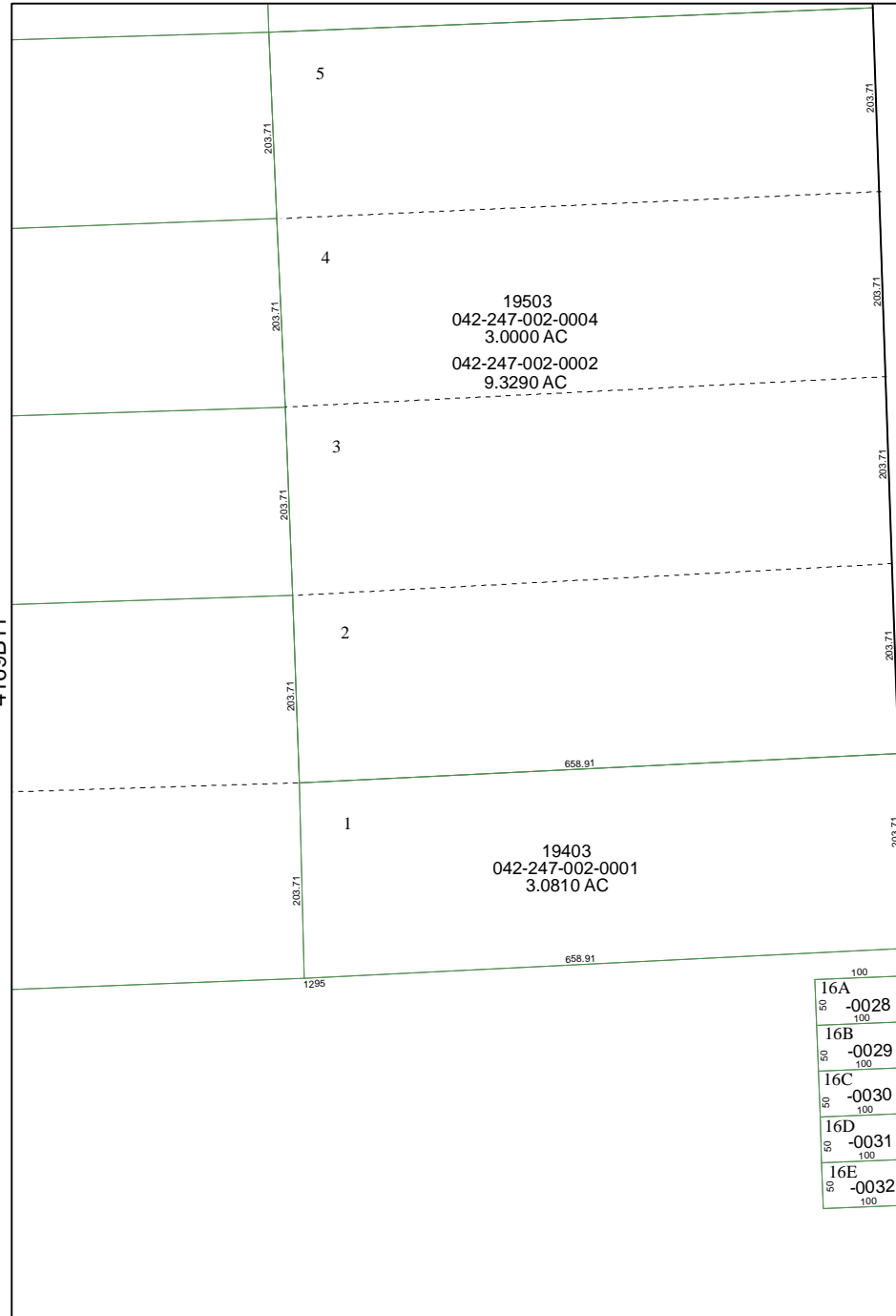


4169B8

4169B11

KERMIE ROAD

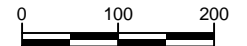


16A	50	100
-0028	50	100
16B	50	100
-0029	50	100
16C	50	100
-0030	50	100
16D	50	100
-0031	50	100
16E	50	100
-0032	50	100

13

4169D4

# Harris County Appraisal District



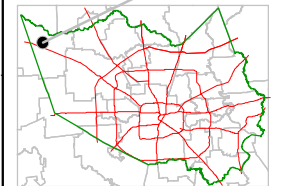
PUBLICATION DATE:  
8/12/2011

Geospatial or map data maintained by the Harris County Appraisal District is for informational purposes and may **not** have been prepared for or be suitable for legal, engineering, or surveying purposes. It does **not** represent an on-the-ground survey and only represents the approximate location of property boundaries.



4269A9

## MAP LOCATION



# FACET 4169B

1	2	3	4
5	6	7	8
9	10	11	12