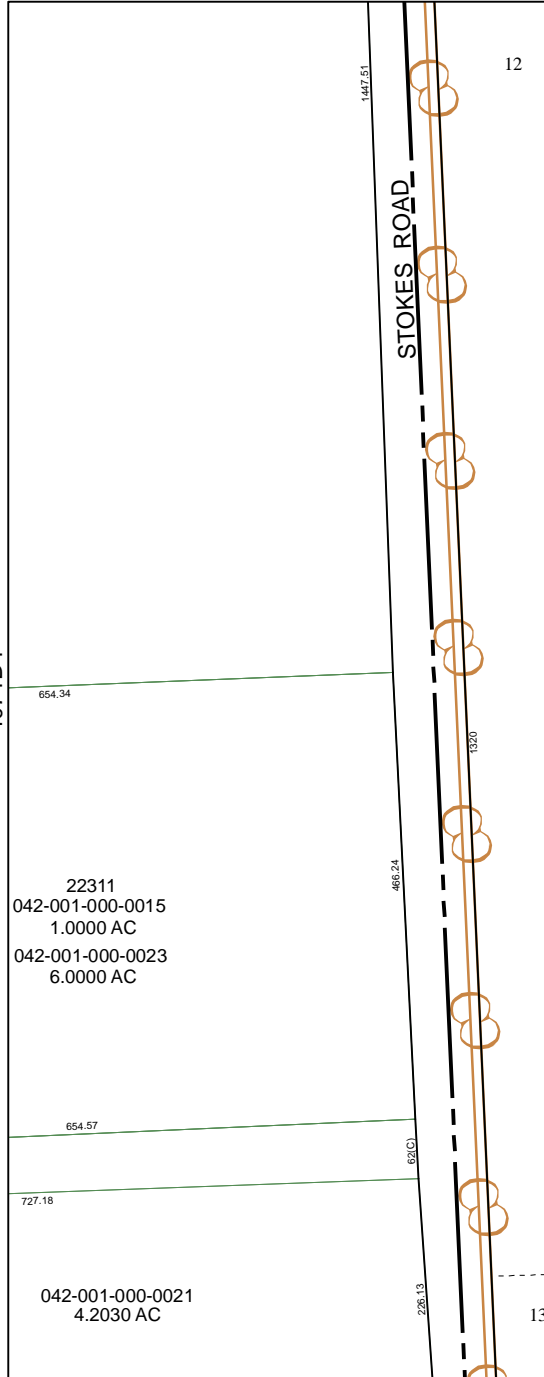


4071B10

4071D1



4071D6

Harris County Appraisal District



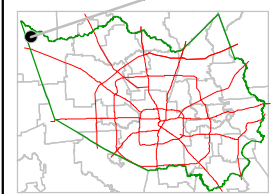
PUBLICATION DATE:
6/28/2011

Geospatial or map data maintained by the Harris County Appraisal District is for informational purposes and may **not** have been prepared for or be suitable for legal, engineering, or surveying purposes. It does **not** represent an on-the-ground survey and only represents the approximate location of property boundaries.



4071D3

MAP LOCATION



FACET 4071D

1	2	3	4
5	6	7	8
9	10	11	12