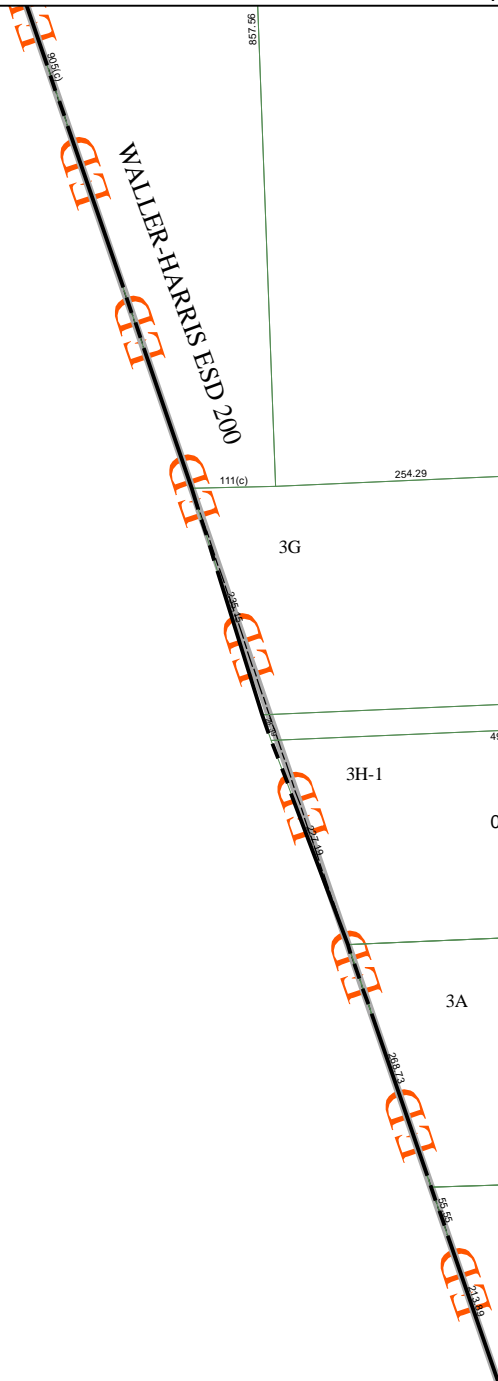


4071C5

WALLER-HARRIS ESD 200



4070A1

3971D12

Harris County Appraisal District



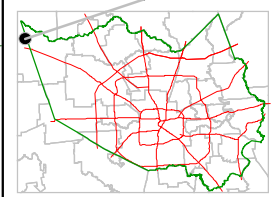
PUBLICATION DATE: 9/1/2011

Geospatial or map data maintained by the Harris County Appraisal District is for informational purposes and may not have been prepared for or be suitable for legal, engineering, or surveying purposes. It does not represent an on-the-ground survey and only represents the approximate location of property boundaries.



4071C10

MAP LOCATION



FACET 4071C

1	2	3	4
5	6	7	8
9	10	11	12