

4071B5

4071A12

Harris County Appraisal District

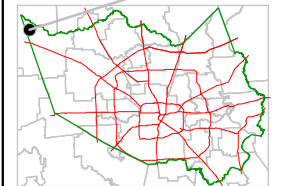


PUBLICATION DATE:
9/1/2011

Geospatial or map data maintained by the Harris County Appraisal District is for informational purposes and may **not** have been prepared for or be suitable for legal, engineering, or surveying purposes. It does **not** represent an on-the-ground survey and only represents the approximate location of property boundaries.

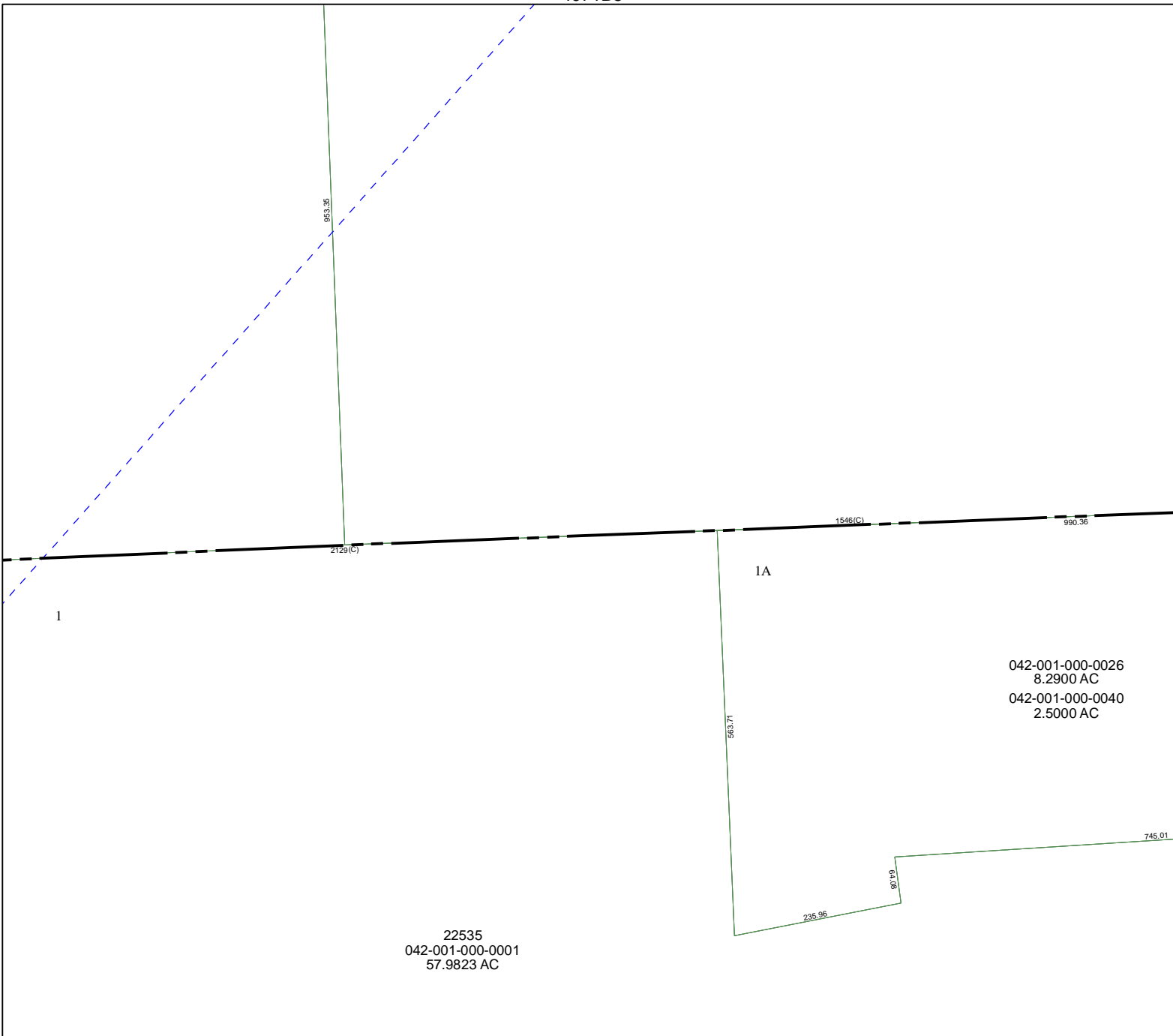


MAP LOCATION



FACET 4071B

1	2	3	4
5	6	7	8
9	10	11	12



22535
042-001-000-0001
57.9823 AC

042-001-000-0026
8.2900 AC
042-001-000-0040
2.5000 AC

4071D1

4071B10