

4071D11

Harris County Appraisal District



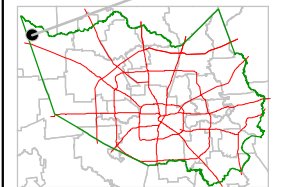
0 100 200

PUBLICATION DATE:
11/4/2011

Geospatial or map data maintained by the Harris County Appraisal District is for informational purposes and may **not** have been prepared for or be suitable for legal, engineering, or surveying purposes. It does **not** represent an on-the-ground survey and only represents the approximate location of property boundaries.



MAP LOCATION

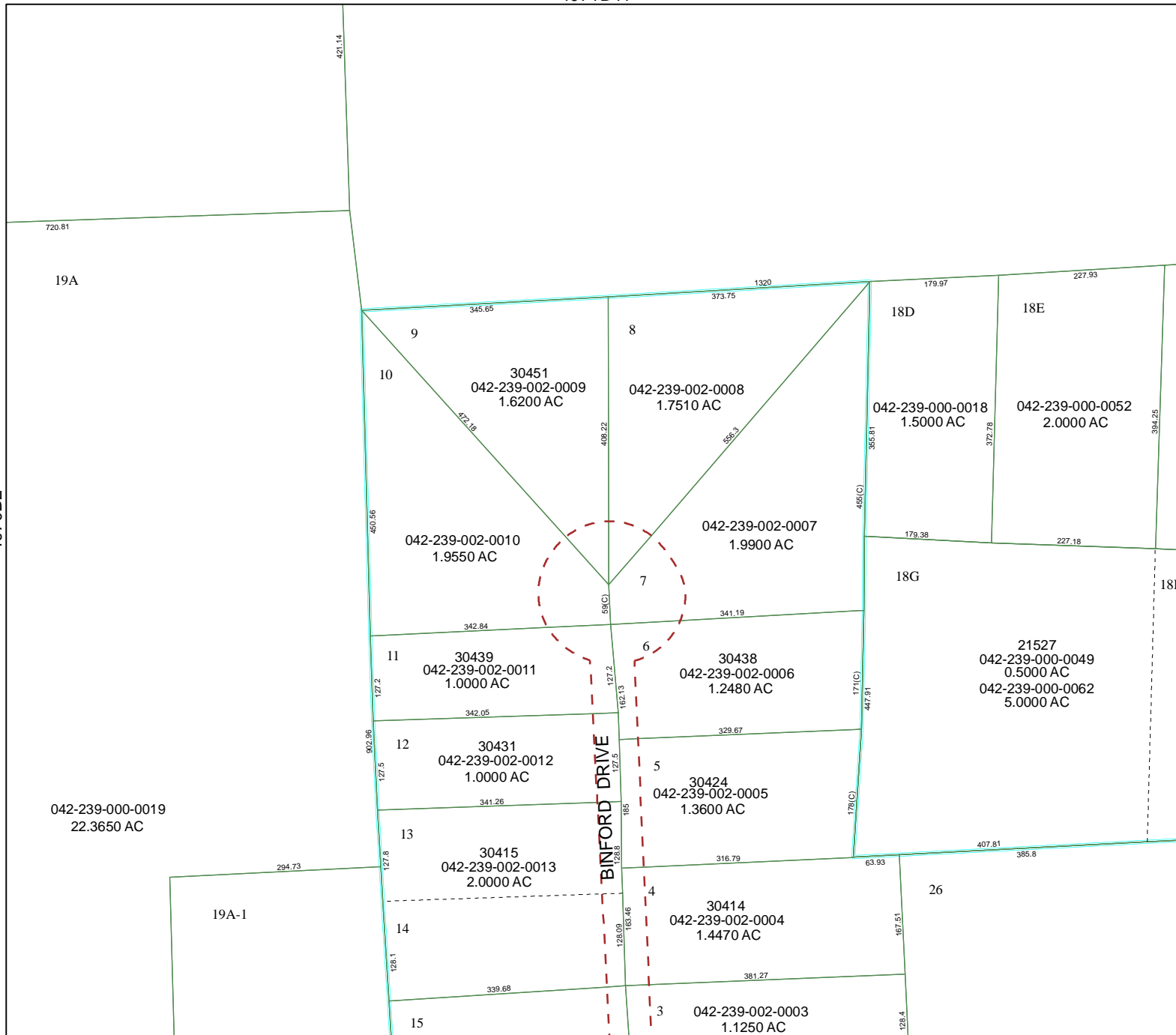


FACET 4070B

1	2	3	4
5	6	7	8
9	10	11	12

4070B2

4070B4



4070B7

720.81

19A

042-239-000-0019
22.3650 AC

19A-1

421.14

450.96

902.96

127.8

128.1

128.4

9

10

11

12

13

14

15

345.65

30451
042-239-002-0009
1.6200 AC

422.18

342.84

342.05

341.26

127.8

339.68

128.1

408.22

59(C)

127.2

127.5

127.8

128.09

128.4

8

042-239-002-0008
1.7510 AC

408.22

341.19

329.67

316.79

381.27

128.4

1320

373.75

586.3

162.13

127.2

127.5

185

163.46

128.4

179.97

18D

355.81

179.38

17(C)

447.91

63.93

128.4

128.4

179.97

18E

372.78

227.18

17(C)

447.91

407.81

385.8

128.4

227.93

18G

179.38

227.18

17(C)

447.91

407.81

385.8

128.4

384.25

18H

384.25

227.18

17(C)

447.91

407.81

385.8

128.4

179.97

18D

355.81

179.38

17(C)

447.91

63.93

128.4

128.4

227.93

18E

372.78

227.18

17(C)

447.91

407.81

385.8

128.4

384.25

18G

179.38

227.18

17(C)

447.91

407.81

385.8

128.4

179.97

18H

384.25

227.18

17(C)

447.91

407.81

385.8

128.4

227.93

18D

355.81

179.38

17(C)

447.91

63.93

128.4

128.4

384.25

18E

372.78

227.18

17(C)

447.91

407.81

385.8

128.4

179.97

18G

179.38

227.18

17(C)

447.91

407.81

385.8

128.4

227.93

18H

384.25

227.18

17(C)

447.91

407.81

385.8

128.4

384.25

18D

355.81

179.38

17(C)

447.91

63.93

128.4

128.4

227.93

18E

372.78

227.18

17(C)

447.91

407.81

385.8

128.4

384.25

18G

179.38

227.18

17(C)

447.91

407.81

385.8

128.4

179.97

18H

384.25

227.18

17(C)

447.91

407.81

385.8

128.4

227.93

18D

355.81

179.38

17(C)

447.91

63.93

128.4

128.4

384.25

18E

372.78

227.18

17(C)

447.91

407.81

385.8

128.4

179.97

18G

179.38

227.18

17(C)

447.91

407.81

385.8

128.4

227.93

18H

384.25

227.18

17(C)

447.91

407.81

385.8

128.4

384.25

18D

355.81

179.38

17(C)

447.91

63.93

128.4

128.4

227.93

18E

372.78

227.18

17(C)

447.91

407.81

385.8

128.4

384.25

18G

179.38

227.18

17(C)

447.91

407.81

385.8

128.4

179.97

18H

384.25

227.18

17(C)

447.91

407.81

385.8

128.4

227.93

18D

355.81

179.38

17(C)

447.91

63.93

128.4

128.4

384.25

18E

372.78

227.18

17(C)

447.91

407.81

385.8

128.4

179.97

18G

179.38

227.18

17(C)

4